



Handbücher/Manuals



**VIPA**  
Gesellschaft für Visualisierung  
und Prozessautomatisierung mbH

Ohmstraße 4  
D-91074 Herzogenaurach  
Tel.: +49-9132-744-0  
Fax: +49-9132-744-144  
Internet: [www.vipa.de](http://www.vipa.de)  
E-Mail: [Info@vipa.de](mailto:Info@vipa.de)

# Manual

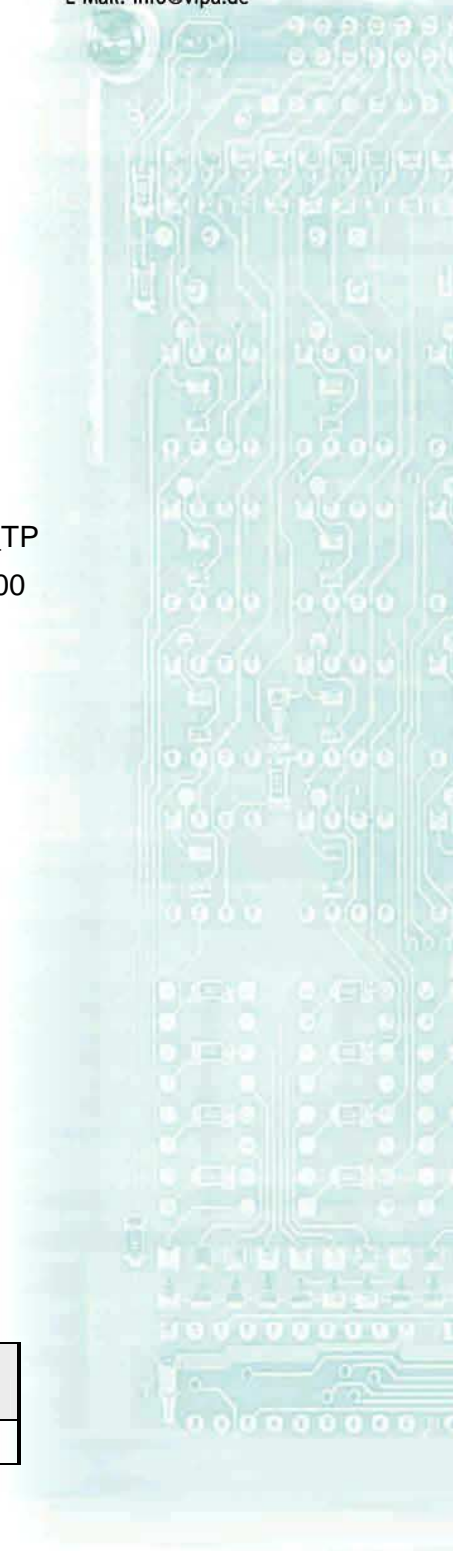
  

## VIPA HMI Touch Panel 605-1BL00

Order no.: VIPA HB160E\_TP  
Reference: RE\_605-1BL00  
Rev. 08/13

This manual is part of the documentation package with order number:  
VIP A HB160E\_TP and relevant for:

Product	Order number	as of state:	
		HW	OS
TP 605LQS	VIPA 605-1BL00	01	Windows® CE V. 5.0





The information in this manual is supplied without warranties. Information is subject to change without notice.

© Copyright 2008 VIPA, Gesellschaft für Visualisierung und Prozess-  
automatisierung mbH  
Ohmstraße 4, D-91074 Herzogenaurach,  
Tel.: +49 (91 32) 744 -0  
Fax.: +49 (91 32) 744-144  
Email: info@vipa.de  
<http://www.vipa.de>

**Hotline: +49 (91 32) 744-114**

All rights reserved.

**Disclaimer of  
liability**

The content of this manual was carefully examined to ensure that it conforms with the described hardware and software. However, discrepancies can not be avoided. The specifications in this manual are examined regularly and corrections will be included in subsequent editions. We gratefully accept suggestions for improvement.

**Trademarks**

VIPA<sup>®</sup> is a registered trademark of VIPA Gesellschaft für Visualisierung und Prozessautomatisierung mbH.

Microsoft, Windows and Windows Logo are either registered trademarks or trademarks of Microsoft Cooperation in the USA and/or other countries.

Any other trademarks referred to in the text are the trademarks of the respective owner and we acknowledge their registration.

## About this Manual

The manual describes the Touch Panel TP 605LQS from VIPA. Here you find detailed descriptions of the Touch Panel beside a product overview. Here you get information about structure, project engineering and operation of the Touch panels from VIPA.

### Overview

#### **Chapter 1: Hardware description**

During this chapter you get hints for deployment of the Touch Panel TP 605LQS from VIPA.

Besides of a description of the single components of the Touch Panel, you will also find the dimensions that are required for the installation. The chapter closes with the technical data.

#### **Chapter 2: Deployment Touch Panel**

This chapter deals with the employment of the Touch Panel.

At the start of the chapter you receive information about the assembly and the connection of the Touch Panel. The main part of the chapter introduces Windows<sup>®</sup> CE and the various communication options offered by the Touch Panel.

#### **Chapter 3: Installation guidelines**

This chapter helps you to install an interference-free automation system. First, possible interference sources and their interaction mechanisms are shown, followed by basic rules for guaranteeing EMC. Afterwards you'll find information about assembly and cabling following EMC rules.

# Contents

<b>User considerations</b> .....	<b>1</b>
<b>Safety information</b> .....	<b>2</b>
<b>Chapter 1 Hardware description</b> .....	<b>1-1</b>
Safety information for Users .....	1-2
Properties .....	1-3
Structure .....	1-4
Components .....	1-6
Dimensions .....	1-8
Technical Data .....	1-9
<b>Chapter 2 Deployment Touch Panel</b> .....	<b>2-1</b>
Installation .....	2-2
Commissioning .....	2-4
Connection to a PLC system .....	2-6
Operating system Windows® CE .....	2-7
Communication via ActiveSync .....	2-13
Integrated Server .....	2-15
Access to the network resources .....	2-22
Integration to WLAN network .....	2-24
Firmware update .....	2-26
<b>Chapter 3 Installation Guidelines</b> .....	<b>3-1</b>
Basic rules for the EMC-equitable assembly of installations .....	3-2
EMC-equitable assembly .....	3-6
EMC-equitable cabling .....	3-7
Special precautions providing high noise immunity .....	3-11
Checklist for the EMC-compliant installation of controllers .....	3-12
<b>Appendix</b> .....	<b>A-1</b>
Index .....	A-1



## User considerations

### Objective and contents

This manual describes the Touch Panels from VIPA. The manual consists of chapters. Every chapter provides the description of one specific topic. It describes the installation, project engineering, usage and the technical data.

This Documentation is targeted at users who have a background in automation technology and profound knowledge about Windows<sup>®</sup> operating systems.

### Guide to the document

This manual provides the following guides:

- An overall table of contents at the beginning of the manual
- An overview of the topics for every chapter
- An index at the end of the manual.

### Availability

The manual is available in:

- printed form, on paper
- in electronic form as PDF-file (Adobe Acrobat Reader)

### Description conventions

[Button]

Buttons are put in brackets e.g. [NEXT] or [OK].

[Key]

Key entry are put in brackets e.g. [STRG]+[A].

Display output

Display outputs are illustrated as *Courier* e.g. `\flashdisk>`

**Keyboard entry**

Keyboard entries are illustrated as *Courier bold* e.g. `\flashdisk> Dir`

*Terms*

Menues, Display elements, terms are *italicised*.

### Icons Headings

Important passages in the text are highlighted by following icons and headings:



#### **Danger!**

Immediate or likely danger.  
Personal injury is possible.



#### **Attention!**

Damages to property is likely if these warnings are not heeded.



#### **Note!**

Supplementary information and useful tips.

## Safety information

### Application specifications

The Operation devices are constructed and manufactured for:

- VIPA CPUs 11x, 21x, 31x, 51x and S7-300/400 from Siemens
- communication and process control
- industrial applications
- operation within the environmental conditions specified in the technical data



### **Danger!**

This device is not certified for applications in

- explosive environments (EX-zone)

### Documentation

The manual must be available to all personnel in the

- project design department
- installation department
- commissioning
- operation



**The following conditions must be met before using or commissioning the components described in this manual:**

- Modification to the process control system should only be carried out when the system has been disconnected from power!
- Installation and modifications only by properly trained personnel
- The national rules and regulations of the respective country must be satisfied (installation, safety, EMC ...)

### Disposal

**National rules and regulations apply to the disposal of the unit!**



## Chapter 1 Hardware description

### Overview

During this chapter you get hints for deployment of the Touch Panel TP 605LQS from VIPA.

Besides of a description of the single components of the Touch Panel, you will also find the dimensions that are required for the installation. The chapter closes with the technical data.

### Content

Topic	Page
<b>Chapter 1 Hardware description .....</b>	<b>1-1</b>
Safety information for Users.....	1-2
Properties.....	1-3
Structure .....	1-4
Components.....	1-6
Dimensions .....	1-8
Technical Data .....	1-9

## Safety information for Users

### Handling of electrostatic sensitive modules

VIPA modules make use of highly integrated components in MOS-technology. These components are extremely sensitive to over-voltages that can occur during electrostatic discharges.

The following symbol is attached to modules that can be destroyed by electrostatic discharges:



The symbol is located on the module, the module rack or on packing material and it indicates the presence of electrostatic sensitive equipment.

It is possible that electrostatic sensitive equipment is destroyed by energies and voltages that are far less than the human threshold of perception. These voltages can occur where persons do not discharge themselves before handling electrostatic sensitive modules and they can damage components thereby, causing the module to become inoperable or unusable. Modules that have been damaged by electrostatic discharges may fail after a temperature change, mechanical shock or changes in the electrical load.

Only the consequent implementation of protection devices and meticulous attention to the applicable rules and regulations for handling the respective equipment can prevent failures of electrostatic sensitive modules.

### Shipping of electrostatic sensitive modules

Modules have to be shipped in the original packing material.

### Measurements and alterations on electrostatic sensitive modules

When you are conducting measurements on electrostatic sensitive modules you should take the following precautions:

- Floating instruments must be discharged before use.
- Instruments must be grounded.

Modifying electrostatic sensitive modules you should only use soldering irons with grounded tips.



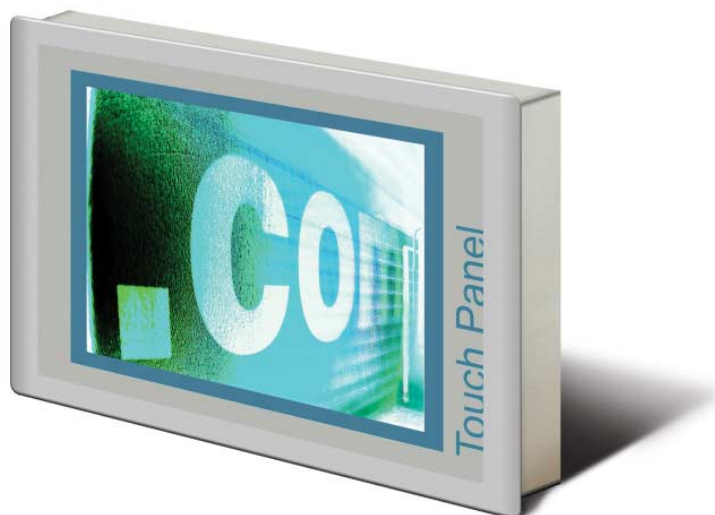
#### Attention!

Personnel and instruments should be grounded when working on electrostatic sensitive modules.

## Properties

### General

The Touch Panel allows you to visualize and alter operating states and recent process values of a connected PLC.



### TP 605LQS 605-1BL00

The VIPA Touch Panel is a compact and modular embedded PC based on Windows® CE. Besides of the extensive Windows® CE functions the Touch Panel offers varied communication possibilities. Here the Touch Panel can simply be configured, controlled and remoted. By including a selectable HMI/SCADA runtime the Touch Panel is particularly suitable for monitoring and controlling of process cycles.

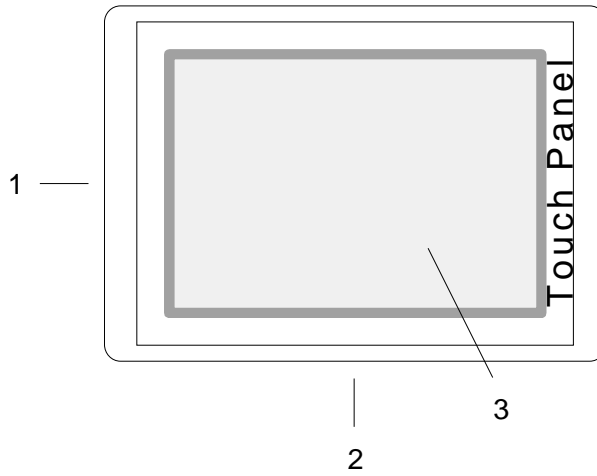
- Microsoft Windows® CE V. 5.0 (full version as option)
- different HMI/SCADA-Runtime selectable
- about 6MByte memory for user data on Board
- CF-Card II and MMC/SD card slot
- horizontal and vertical display selectable in 90° steps
- MPI, Profibus DP slave, USB-B interfaces on board
- robust aluminium die casting case
- display resolution up to 240 x 320 / 320 x 240 (16 levels)
- battery backed clock
- resistive touch screen
- easy mounting via integrated pivoted lever
- protection class IP65 (frontal)

### Order data

Type	Order number	Description
TP 605LQS	VIPA 605-1BL00	5.7" QVGA, LCD monochrome, MPI/Profibus DP/RS485, USB-B

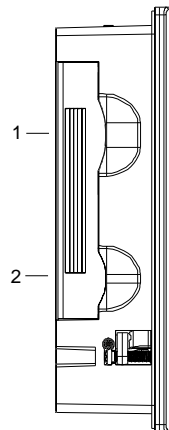
## Structure

### Front view



- [1] Slot for storage medium (CF, SD/MMC)
- [2] Connection for interfaces and power supply
- [3] Display with touch sensitive area (touch screen)

### Side view

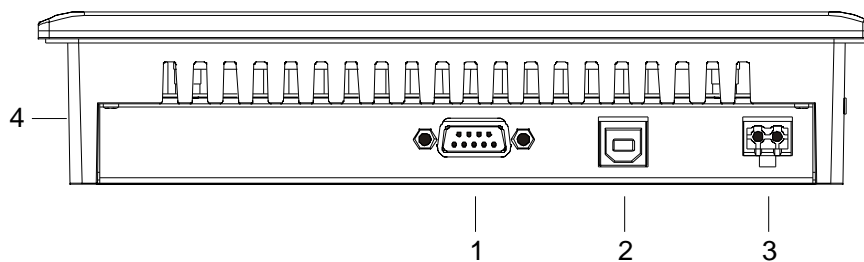


- [1] Compact Flash
- [2] MMC / SD



#### Note!

Please regard that the Touch Panel always has to be supplied with external voltage!

**Bottom view  
(Interfaces)****TP 605LQS 5.7"**  
605-1BL00**Components**

- [1] MPI/Profibus DP/RS485 interface
- [2] "Slave"-USB-B interface
- [3] Slot for DC 24V voltage supply
- [4] Slot for CF/SD/MMC storage medium

## Components

### Memory management

The following memory systems are available for every Touch Panel:

- 64MByte work memory
- 32MByte Flash-Disk (6MByte for user data)
- Slot for CF (Type II)
- Slot for MMC/SD

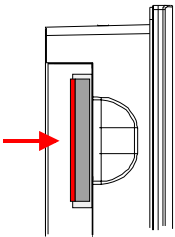
### Work memory

Every Touch Panel has a work memory with a size of 64MByte. The work memory is not buffered and is deleted after shut down. Please regard that also registry entries are stored in the work memory that are set back to default settings after the next re-boot. You may save them permanently by means of the *KuK Tools* (within consignment).

### Flash disc

As internal permanent storage medium every Touch Panel has a flash disc with a size of 32MByte (6MByte user data). After the start of Windows® CE this memory is listed as *Flashdisk* at *My Device*.

### Slot for CF



Here you may plug a **CompactFlash®** type II. The card may be plugged and removed during runtime and is immediately listed as *Storage Card* at *My Device*.

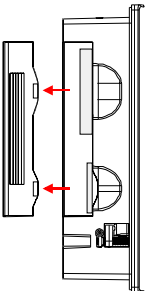
Every CompactFlash® storage module has a pulling edge. Hold the CompactFlash in the way that the pulling edge points to the left side. Push the storage module without much power into the slot until the impact. To remove the card touch it at the pulling edge and pull.

### Slot for SD/MMC

At this slot you may plug storage modules of the type SD or MMC. The card may be plugged and removed during runtime and is immediately listed as *SDMMC Card* at *My Device*.

Please take care to plug the according card as shown at the backside of the Touch Panel.

### Security flap for memory cards



At the left side of the Touch Panel are the card slots for memory cards. The cards are visibly covered by a security flap and are thus secured from slipping out.

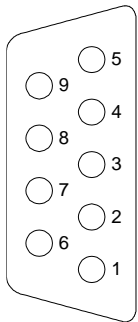
Please take care to pull the security flap back before plugging or pulling a memory card like shown in the illustration and put it back again afterwards.

When plugging, the security flap additionally snaps into position above the plugged memory card.

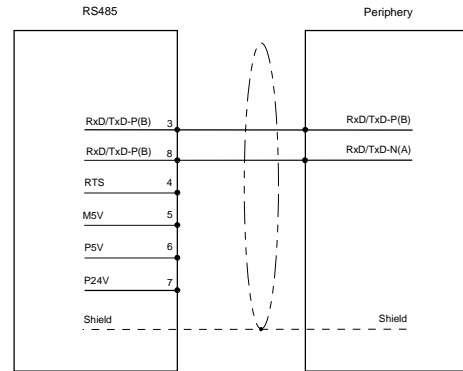
**Profibus DP / MPI interface (RS485)**

9pin jack

Connection RS485



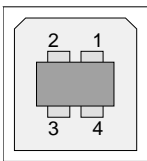
Pin	RS485
1	n.c.
2	M24V
3	RxD/TxD-P (Line B)
4	RTS
5	M5V
6	P5V
7	P24V
8	RxD/TxD-N (Line A)
9	n.c.



**"Slave"-USB-B**

For project transfer with Microsoft ActiveSync a programming cable can be connected using the "Slave"-USB-B interface. The pin assignment is as follows:

"Slave"-USB-B:



Pin	Assignment
1	VCC
2	DM
3	DP
4	GND

VIPA USB-B Programming cable

The USB-A interface of your PC can be connected to the "Slave"-USB-B interface of your Touch Panel deploying the USB programming cable.

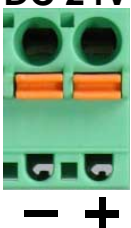


The USB programming cable is delivered by VIPA with order No. VIPA 670-0KB10.

**Power supply**

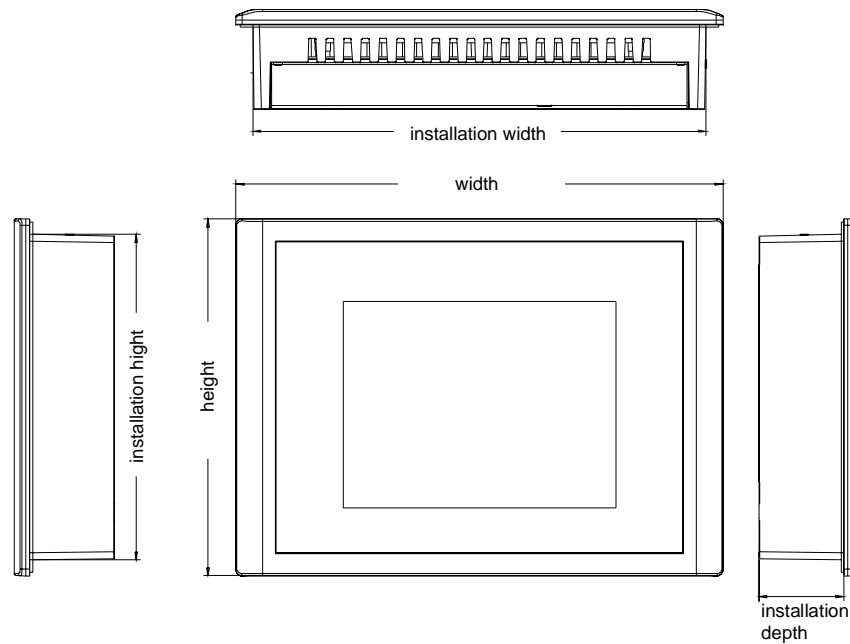
The Touch Panel has got an integrated power supply. The power supply has to be provided with DC 24V (20.4 ... 28.8V). For this you find an according DC 24V slot at the bottom side.

**DC 24V**



The power supply is protected against inverse polarity and overcurrent.

## Dimensions



### Installation dimensions

For the installation of the Touch Panel in control cabinets and desks the following dimensions are necessary:

5.7"  
605-1BL00

Installation cutting (W x H)	200 x 144mm
Front panel (W x H)	212 x 156mm
Installation depth	37mm



### Note!

The degrees of protection are only guaranteed when the following is observed:

- Material thickness at the mounting cut-out: 2 ... 5mm
- the deviation from the plane for the panel cut-out is  $\leq 0.5\text{mm}$ . This condition must be fulfilled for the mounted HMI device
- Permissible surface roughness in the area of the seal:  $\leq 120\mu\text{m}$  (friction coefficient 120)



## Technical Data

### TP 605LQS

Electrical data	VIPA 605-1BL00
Nominal supply voltage	DC 24V (20.4 ... 28.8V)
ESD/Burst	Acc. IEC 61000-4-2 / IEC 61000-4-4 (up to level 3)
Shock resistance	Acc. IEC 60068-2-6 / IEC 60068-2-27 (1G/12G)
Level of noise suppression	Acc. IEC 61000-6-4
mark of conformity and certification	CE
Clock and housing	
Processor	Xscale 520MHz
Clock	Hardware clock, buffered
Housing - protection class	Solid aluminium case
- Front	IP 65
- Back	IP 20
Environment conditions	
Mounting position	horizontally/vertically
Operating temperature	0 ... +50°C
Relative humidity max.	85%
Storing / Transport temperature	-20 to +60°C
Display	
Size	5.7"
Resolution	240 x 320 / 320 x 240
Colors	STN LCD monochrome (16 levels)
MTBF Backlights (25°C)	ca. 75000h
Peripherals	
Touch screen	resistive
Memory	
Type	32MB Flash / 64MB RAM
Available memory for user data	ca. 6MByte
SD/MMC Push-Push-Slot	yes
Interfaces	
MPI (12Mbits), Profibus DP	RS485 isolated
USB	USB-B
Electrical Data	
Nominal supply voltage	DC 24V (20.4 ... 28.8V)
Nominal current	0.4A
Housing	
Mounting	via 4 integrated pivoted lever
Dimensions and weight	
Front side (WxH)	212 x 156mm
Back side (WxHxD)	198 x 142 x 37mm
Installation cutting (WxH)	200 x 144mm
Weight	1.2kg



## Chapter 2 Deployment Touch Panel

### Overview

This chapter deals with the employment of the Touch Panel.

At the start of the chapter you receive information about the assembly and the connection of the Touch Panel. The main part of the chapter introduces Windows® CE and the various communication options offered by the Touch Panel.

### Content

Topic	Page
<b>Chapter 2 Deployment Touch Panel</b> .....	<b>2-1</b>
Installation .....	2-2
Commissioning.....	2-4
Connection to a PLC system .....	2-6
Operating system Windows® CE .....	2-7
Communication via ActiveSync .....	2-13
Integrated Server .....	2-15
Access to the network resources.....	2-22
Integration to WLAN network .....	2-24
Firmware update .....	2-26

## Installation

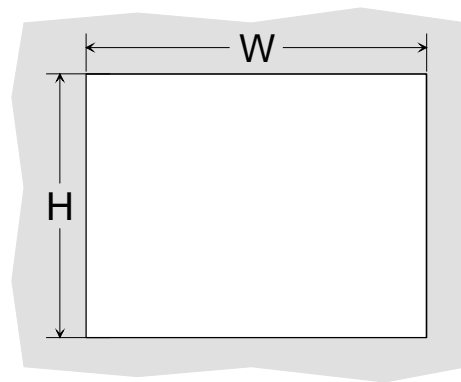
### Overview

The Touch Panel is suitable for the installation in operating tables and control cabinet fronts. The installation happens via the backside. The Touch Panel is provided with a patented integrated fixing technique that allows an easy connection with a simple screwdriver.

Due to the fact that the Touch Panel has a plug connector for bus connection and voltage supply, a fast and easy device change is possible.

### Installation cutting

For the installation into a operating tableau and control cabinet fronts, the Touch Panel requires the following front plate cutting:

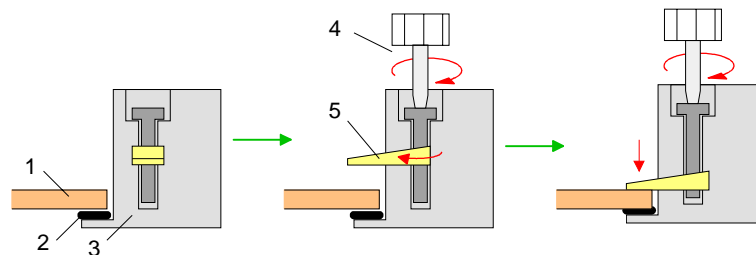


Touch Panel	W x H in mm
605-1BL00	200 x 144

### Installation

The fixing technique is integrated in the casing of the Touch Panel and accessible via the backside.

For the installation, a small slit screwdriver is required. Push the operator panel [3] from the front side into the front panel cutting [1] until it touches the panel with the seal [2]. Now bolt the lever [5] clockwise with the screwdriver [4] until it rotates to the outside. Further screwing bolts the lever to the front panel until it holds this to the control cabinet front.

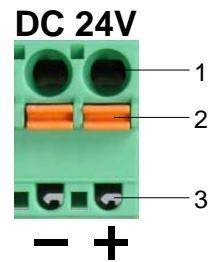
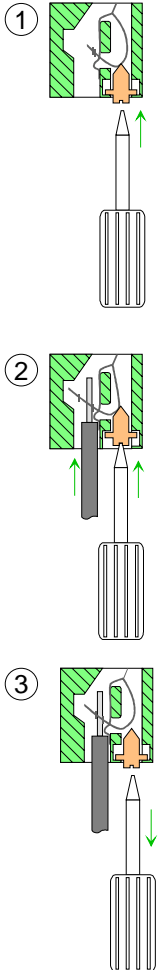


**Connect power supply**

For the cabling of the DC 24V power supply green plugs with CageClamp technology are deployed. The spring-clip connector technology simplifies the wiring requirements for signaling and power cables. In contrast to screw terminal connections, spring-clip wiring is vibration proof.

Here also you may connect wires with a cross-section of 0.08mm<sup>2</sup> to 2.5mm<sup>2</sup>. You can use flexible wires without end case as well as stiff wires.

You fix the conductors to the CageClamps like this:



- [1] Round opening for wires
- [2] Locking (orange) for screwdriver
- [3] Test point for 2mm test tip

The picture on the left side shows the cabling step by step from top view.

- For cabling you push the locking vertical to the inside with a suiting screwdriver and hold the screwdriver in this position.
- Insert the insulation-stripped wire into the round opening. You may use wires with a cross-section from 0.08mm<sup>2</sup> to 2.5mm<sup>2</sup>.
- By removing the screwdriver the wire is connected safely with the plug connector via a spring.

## Commissioning

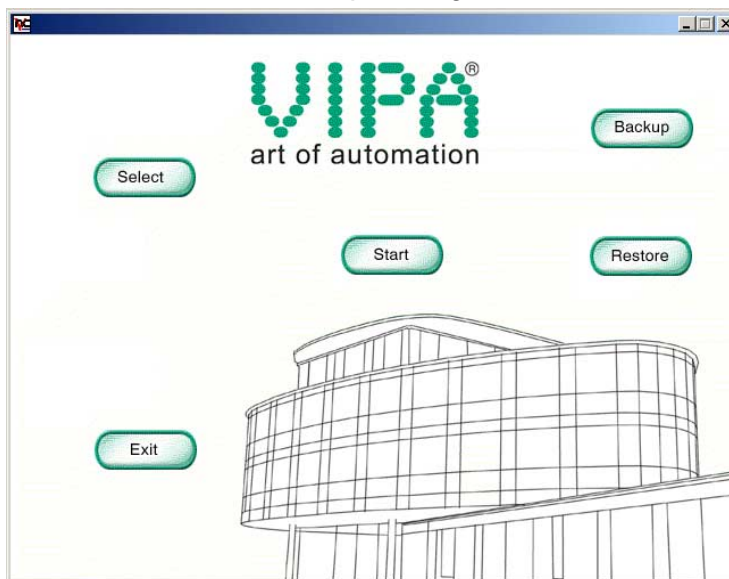


### Attention!

- Before commissioning the device must be brought to room temperature.
- At condensation the device must be absolutely dry before connected to power.
- To avoid overheat during operation the device must not be laid open to direct sun light.
- After opening the control cabinet or desk, there are parts with possible dangerous voltage available.
- For all signal connections only screened cables are permitted.
- Signal cables must not be let within the same cable shaft as high voltage cables.

### VIPA Startup Manager

As soon as the Touch Panel is provided by power supply the Touch Panel starts with the *VIPA Startup Manager*.



The *VIPA Startup Manager* has the following buttons:

- |         |  |
|---------|--|
| Start   | A project is started within the <i>VIPA Startup Manager</i> after a configured time was passed. The project may be started immediately by means of [Start].  |
| Select  | Depending on the installed visualization software the project to be started may either be selected with [Select] or within the editor of the visualization software. For an automatically start of the project the project may once be started manually by [Start] if necessary. |
| Exit    | The <i>VIPA Startup Manager</i> is closed by [Exit] and it is returned to Windows® CE.   |
| Backup  | With [Backup] the files of the Flashdisk and the Registry settings may be stored.  |
| Restore | The backed up files may be restored by [Restore].  |

**Settings**

The settings of the *VIPA Startup Manager* are stored in the file *StartupMngr.dat*. This file may be found on the Touch Panel at **My Device** > Flashdisk.

Within this file the settings of the VIPA Startup Manager may be changed by parameters.

**Note!**

This file is hidden as default. To make this file visible within Windows® CE every option of **My Device** > **View** > *Options* is to be deactivated.

Parameter of  
StartupMngr.dat

Depending on the installed visualization software the following parameters are used:

Parameter	Meaning
VISUALISATION	Indicates which visualization software is used.
LOCATION	Indicates the file location of the visualization software.
FILE	Path and file name of the last started project.
FONT	Indicates the storage location of additional fonts to be registered.
PASSWORD	Here a password may be entered. Before returning to Windows® CE you are asked for this password.
BACKGROUND	Path and file name of the background picture.
AUTOLAUNCHDELAY	Here a delay time in seconds may be set. If this time is passed the preset project is started automatically.

Please consider this during setting parameters:

Parameter and value is always be connected by "=". Blanks are not allowed. For the parameter names capitals are to be used.

The whole path is to be used when entering a file location e.g.

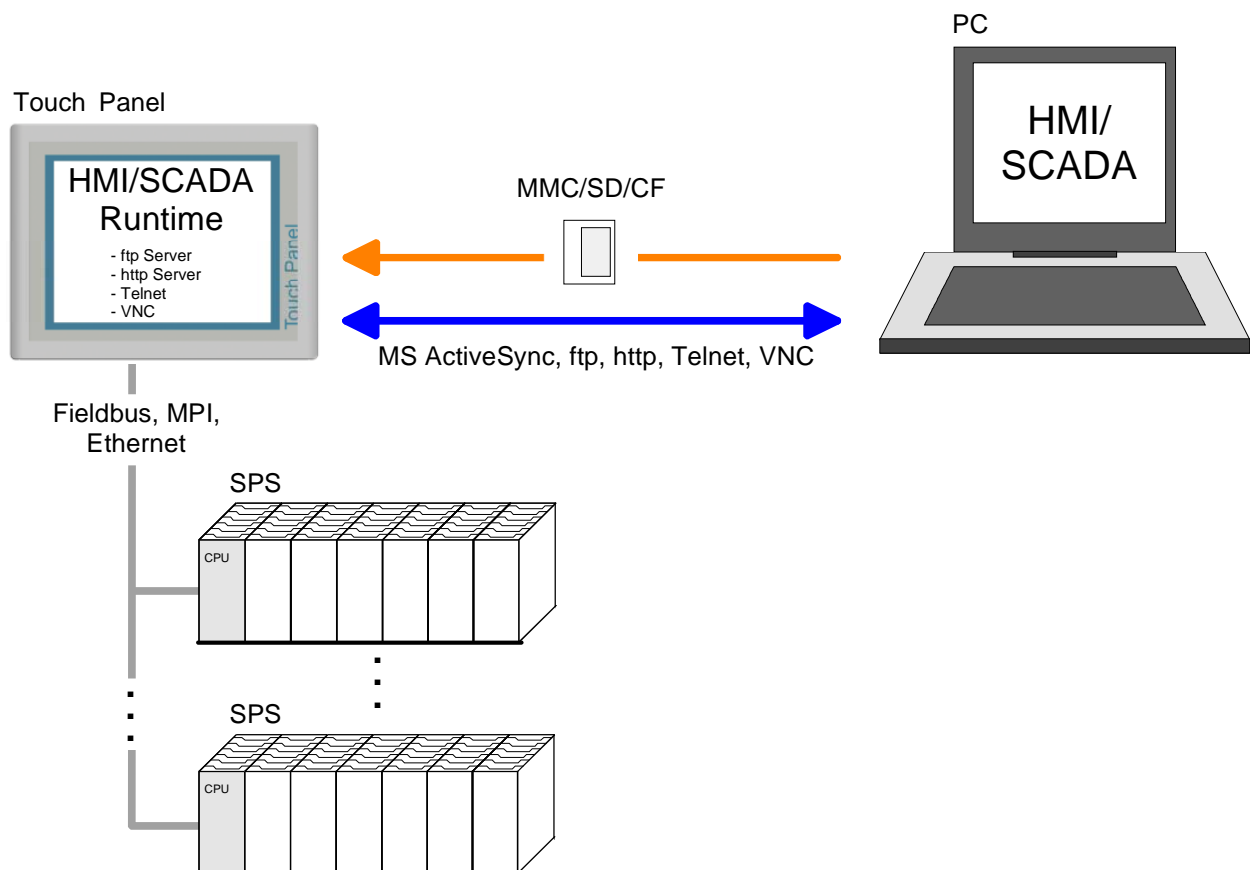
BACKGROUND=\\flashdisk\\background.jpg

## Connection to a PLC system

For the inclusion into your PLC system several HMI/SCADA project-engineering platforms are at your disposal that has to be installed at an external PC. Here you may create your project, where appropriate simulate it and transfer it to the Touch Panel via a connection that you've entered before. Via the at the Touch Panel pre-installed runtime version of the HMI/SCADA project engineering platforms your project is run able.

By using the according communication driver, the Touch Panel supports connecting options to the PLC via MPI, field bus and Ethernet.

During the operation your operating device communicates with the according PLC and reacts to the application courses in the PLC according to the configured processes. Via dialogs configured before, process values may be monitored graphically, altered and evaluated.





## Operating system Windows® CE

### Windows® CE

Within the consignment of the Touch Panel is the operating system Microsoft Windows® CE V. 5.0. It is an OEM licensed English version. The newly developed standard Windows® CE allows devices that are communicating with each other to exchange information with Windows® based devices and to establish connections to the Internet.

Microsoft Windows® CE is a 32bit, open and scalable platform for a multiplicity of communication and data processing devices. The functions like multi-tasking and multi-threading are supported by this operating system.

As default Microsoft Windows® CE Core 5.0 is delivered and optionally Microsoft Windows® CE Professional Plus 5.0. The version may be found at a label at the backside of your Touch Panel.

### Windows® CE Core 5.0

This version is a Windows® operating system reduced to the absolute essentials with mouse operation (touch screen) that requires only small hardware resources. Here the 2 icons "My Device" and "Recycle Bin" may exclusively be found at the Desktop.

### Windows® CE Professional Plus 5.0

The *Professional-Plus* version is an enhanced *Core* version. Here among others some file viewer, an Internet browser and bluetooth support are integrated. On the desktop besides many icons a mouse pointer is displayed at the pen position. As soon as the pen is hold at one position the context menu is displayed.

### Differences *Core-* and *Professional-Plus* version

Features Windows® CE	Core 5.0	Professional Plus 5.0
ftp, http, Telnet and VNC server	-	-
RAS server (RS232)	-	-
ActiveSync file transfer (USB-B)	x	x
RDP (Remote Desktop Protocol)	-	-
Internet Explorer 6	-	-
Registry Editor	x	x
WordPad	-	x
Mouse pointer	-	x
USB keyboard driver	-	-
HP printer driver (COM, Ethernet, USB)	-	-
Bluetooth USB stick support (Keyboard, mouse, modem, network)	-	-
WLAN Support (SD Card)	x	x
File viewer for Word, Excel, PowerPoint and PDF	-	x
VIPA Startup Manager	x	x

**Differences to the standard Windows® operation**

Please regard that for the deployment of Windows® CE a thorough knowledge of operating Windows® are assumed. Here are only shown the differences to a "standard" Windows® operating system.

**Pen entry**

You're operating the Touch Panel by means of a pencil res. with the finger. When touching an area at the touch screen this area is recognized and the program reacts accordingly. The following types of entry are differentiated:

***Double click***

A double click has to be executed like mouse operation by touching the area at the screen twice. A double click on an object open res. executes this.

***Drag***

By tapping on an object and then dragging you may move the object on the screen. If no object is selected, a frame is created by the dragging that selects the touched objects.

**Characteristics with Windows® CE Professional Plus V. 5.0**

In the *Professional Plus* version mouse functions are fully supported. As soon as the touch screen is touched with the pen, a mouse pointer is shown on the desktop at the pen position.

To show the context menu you can either press the right key of your mouse connected by USB or hold the pen on one position.

**Navigation within the dialog window**

The windows may be moved via the head bar. Here you may also find the [OK] button to confirm entries and the [X] button for exiting the dialog.

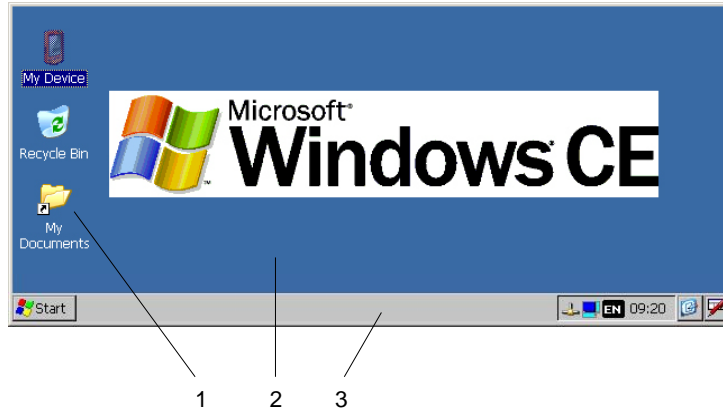
**Exit Windows® (shut down)**

You may not exit Windows®. By switching the power supply off and on again you may restart Windows®. Before a reboot you should always save your data res. close all running applications to avoid data loss.

**Note!**

Please regard that made changes are set back after PowerOFF-PowerON and are only stored via *Save Registry* which is to be found at **Start > Programs > KuK Tools**.

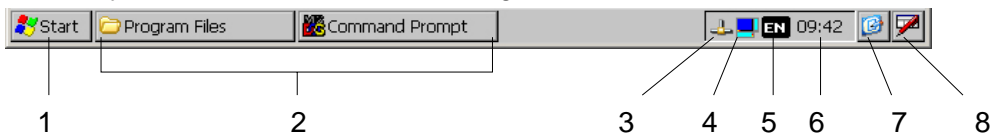
**Structure**



1	<i>Icon</i>	Via icons on the desktop you gain direct access to the application related to the icon.
2	<i>Desktop</i>	The desktop is the screen that is shown after login at Windows® CE. It contains e.g. links to the mostly used applications res. system components.
3	<i>Task bar</i>	The task bar is part of the desktop. When opening an application, a document or a window, every running object is displayed as button on the task bar. Via this buttons you may easily change between the open windows.

**Task bar**

Basically the task bar has the following structure:



1	<i>Start button</i>	This button offers you access to all components of your Touch Panel like e.g. applications, system settings, file browser etc.
2	<i>Open applications</i>	For every open application a button is to be found in the task bar. There is no button for minimizing. The switch between the applications happens via this buttons.
3	<i>Network connection</i>	As soon as your Touch Panel is connected via Ethernet you may here display the Ethernet address. If there is no connection via Ethernet, the symbol is displayed crossed out.
4	<i>Desktop direction</i>	This symbol allows you to switch between 2 desktop directions. The position setting happens in steps of 90° and can be set via double click in a dialog window.
5	<i>Keyboard layout</i>	If you've connected a keyboard you may choose the wanted language layout via this button.
6	<i>Time</i>	This area shows the time that you may change via double click.
7	<i>Show desktop</i>	All windows are minimized and the desktop is shown.
8	<i>Software keyboard</i>	This button displays a keyboard at the screen. "Hide Input Panel" hides the keyboard again.

**Software keyboard**



The button allows you to select one of the available software keyboards. At the moment the following standard keyboards are implemented:

Software keyboard  
*Keyboard*

Normal:

Input Panel																
Esc	1	2	3	4	5	6	7	8	9	0	-	=	←			
Tab	q	w	e	r	t	y	u	i	o	p	[	]				
CAP	a	s	d	f	g	h	j	k	l	;	'					
Shift	z	x	c	v	b	n	m	,	.	/	↵					
Ctl	á	ü	˘	\									↓	↑	←	→

At pushed SHIFT key:

Input Panel																
Esc	!	@	#	\$	%	^	&	*	(	)	_	+	Del			
Tab	Q	W	E	R	T	Y	U	I	O	P	{	}				
CAP	A	S	D	F	G	H	J	K	L	:	"					
Shift	Z	X	C	V	B	N	M	<	>	?	↵					
Ctl	á	ü	˘										↓	↑	←	→

At pushed [a´ü] key:

Input Panel																
Esc	˘	ı	œ	¢	£	¥	§	°	±	µ	-	=	←			
Tab	à	á	â	ã	ä	å	æ	ç	ä	ñ	[	]				
CAP	è	é	ê	ë	ì	í	î	ï	þ	š	'					
Shift	ò	ó	ô	õ	ö	ù	ú	û	ü	/	↵					
Ctl	á	ü	˘	ý	ÿ								↓	↑	←	→



**Note!**

Please regard that the umlauts äöü may exclusively entered via the software keyboard *Keyboard*.

Software keyboard  
*Large KB*

Normal:

Input Panel															
Esc	F1	F2	F3	F4	F5	F6	F7	F8	F9	F10	F11	F12	Home	End	Prop
`	1	2	3	4	5	6	7	8	9	0	-	=	BS		
Tab	q	w	e	r	t	y	u	i	o	p	[	]	\		
Caps Lock	a	s	d	f	g	h	j	k	l	;	'		return		
Shift	z	x	c	v	b	n	m	,	.	/	up		pgup		
Ctrl	win	Alt							ins	del	lt	dn	rt	pgdn	

At pushed SHIFT key:

Input Panel															
Esc	F1	F2	F3	F4	F5	F6	F7	F8	F9	F10	F11	F12	Home	End	Prop
˘	!	@	#	\$	%	^	&	*	(	)	_	+	BS		
Tab	Q	W	E	R	T	Y	U	I	O	P	{	}			
Caps Lock	A	S	D	F	G	H	J	K	L	:	"		return		
Shift	Z	X	C	V	B	N	M	<	>	?	up		pgup		
Ctrl	win	Alt							ins	del	lt	dn	rt	pgdn	

Meaning:

- Home** Position 1
- End** End
- BS** Backspace
- up** ↑
- dn** ↓
- lt** ←
- rt** →
- pgup** Page ↑
- pgdn** Page ↓
- ins** Insert
- del** Delete
- Tab** Tabulator
- Shift**
- Caps/Lock**

Hide keyboard

The software keyboard allows you to enter key entries without connecting an external keyboard. As soon as an entry is required the software keyboard is automatically shown.

*Hide Input Panel* hides the keyboard again.

**System setting  
(Control Panel)**

Due to the fact that many components of the *Control Panel* are concurring with the *system control* of Windows®, most of the description is here dispensed. The description of the control panel components relevant for operating the Touch Panel is to be found in the following:

*Set display*

Via **Start** > *Settings* > *Control Panel* > *Display* the dialog windows for the display properties opens. Here you may change the settings for the monitor options.

For example you may adjust the brightness and contrast via the register *Settings*.

*Calibrate touch screen*

If your touch screen does not always react on a double click or recognizes the position of an entry not precisely, you may call the dialog *Stylus* via **Start** > *Settings* > *Control Panel*.

In the register *Double-Tap* you may use the grid pattern to preset a double click velocity and test this on the symbol below. OK takes over the set value. The calibration of the touch screens happens via the register *Calibration* by following the instructions.

*System properties (System)*

Here you receive information about the version of the current Windows® operating system, the memory load and sharing (alterations here are not taken over into the registry) and about the copyright.

The register *Device Name* allows you to change the device name that is e.g. shown during Ethernet communication.

**Note!**

All alterations made here are cleared after PowerOFF-PowerON. To store them permanently into the registry file you have to store them explicitly. For this, call "Save Registry" at **Start** > *Programs* > *KuK Tools*. Use [OK] to store the data in the registry file.

Set MPI parameters The dialog window where to configure the integrated MPI interface is to be found at **Start** > *Settings* > *Control Panel* > *MPI Configuration*.

### *HSA*

Here you set the highest MPI address (**highest station address**). Within a MPI network the highest MPI address must be identical!

### *TS*

With TS (**this station**) you set the local MPI address for the Touch Panel.

### *Baud Rate*

Enter here the transfer velocity of your MPI net. The baud rate has to be identical for every MPI participant within the network. According to the *Baud Rate* the network parameters are set.

### *Default Net Parameters*

It is recommended not to alter the *Default Net Parameters* that are set by the baud rate.

### *Status*

The status of the MPI interface is monitored via *Status* as "Offline", "Online" or "Error".



### **Note!**

Here made changes are also not saved after PowerOFF-PowerON. Save the data permanently in the current registry file via *Save Registry* at **Start** > *Programs* > *KuK Tools*.

## Communication via ActiveSync

### Outline

ActiveSync is a communication platform developed by Microsoft especially for mobile computers to synchronize data between a mobile device and a PC via USB res. Ethernet. Many developer tools res. SCADA project-engineering tools use ActiveSync for the data transfer.

Before you may access the Touch Panel from the PC via ActiveSync you have to install it at the PC.

ActiveSync is freeware and may be downloaded from [www.microsoft.de](http://www.microsoft.de).

### Installation

- Download the ActiveSync from the Microsoft website and start the file MSASYNC.EXE.

The following dialog window appears:

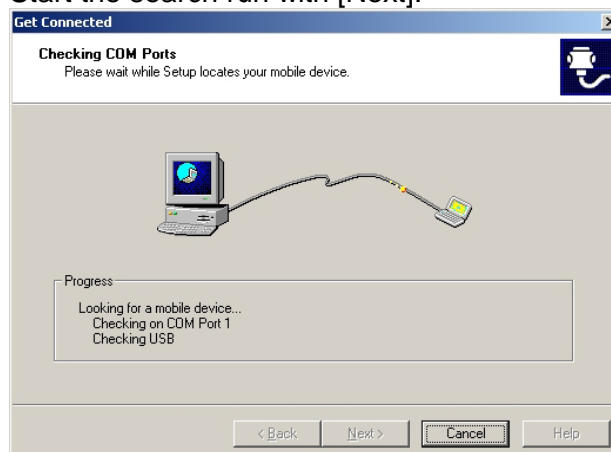


- Start the installation with [Next].
- Choose an installation directory and click on [Next].  
→ ActiveSync is installed.

### Establish connection

After the installation the dialog window "establish connection" is opened. If your Touch Panel shall be available via Ethernet you have to install a point-to-point connection first.

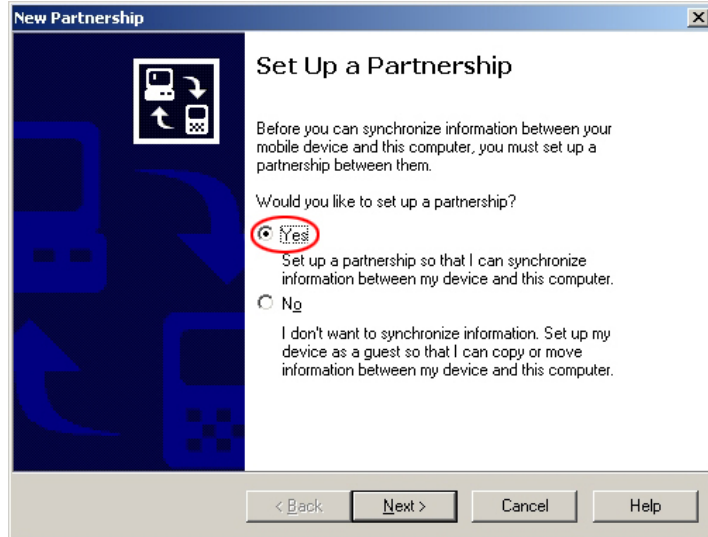
- Start the search run with [Next]:



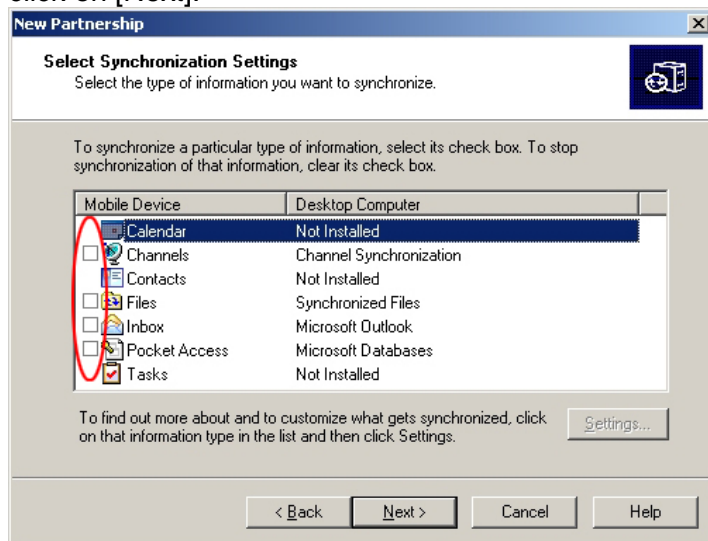
Install partnership for USB communication

Now you may install a "partnership" via an USB connection with the following approach:

- Connect your Touch Panel via the "Device"-USB-B jack with your PC and turn on the Touch Panel. → The USB device (Touch Panel) is recognized and the dialog window "new partnership" opens.



- Choose "yes" that you want to fix a partnership and push [Next].
- In the now opening window, de-activate all synchronization settings and click on [Next]:



- [Finish] establishes the partnership.

Now you may access the Touch Panel with ActiveSync via USB.



**Note!**

To keep the settings also after power on, you have to store them to the registry with **START > Programs > KuK Tools > Save Registry.**



## Integrated Server

<b>Login data</b>	<p>The Touch Panel has several integrated server that enable a remote maintenance within a network. Some servers only allow access by means of entering <i>User name</i> and <i>Password</i>. Per default the following login data are used:</p> <p>User name:     <b>wince</b> Password:       <b>vipatp</b></p>
<b>Change password</b>	<p>You must not change the user name. But you may change the password via the registry.</p> <p>For this, start the editor via <b>START</b> &gt; <i>Programs</i> &gt; <i>Registry Editor</i>. The entry for the password is to be found at: HKEY_LOCAL_MACHINE/KUKINIT/DefaultPasswd</p> <p>Please remember to store the changes to the registry via <b>START</b> &gt; <i>Programs</i> &gt; <i>KuK Tools</i> before switching off.</p>
<b>Overview</b>	<p>Per default the following server are integrated:</p> <ul style="list-style-type: none"><li>• ftp server (activated)</li><li>• http server (activated)</li><li>• Telnet (activated)</li><li>• VNC (not activated)</li></ul>
<b>Phrases</b>	<p>Phrases that are used in the description of the server:</p>
<b>Client</b>	<p>A client is an application that uses the service of a server within a network. For example, a web browser is a client because at every call of a website it sends a request to a web server and receives an answer.</p>
<b>Server</b>	<p>A server is an application that waits for the contact request of a client application and exchanges messages with it after contact start. This communication type is called Client-Server communication.</p>
<b>Host</b>	<p>Computer within a network where at least one server is running.</p>
<b>Download</b>	<p>Data transfer Server → Client</p>
<b>Upload</b>	<p>Data transfer Client → Server</p>

**ftp server**

By means of an ftp server data between client and server can be exchanged. Here you may copy, delete or create files and directories.

For in the meanwhile an ftp client (Internet Explorer) is integrated in Windows®, this is the easiest method for remote maintenance of the Touch Panel.

**Conditions for ftp access**

Depending on the ftp client your PC has to fulfill the following conditions for an ftp connection. If there are still problems with the ftp access ask your system administrator.

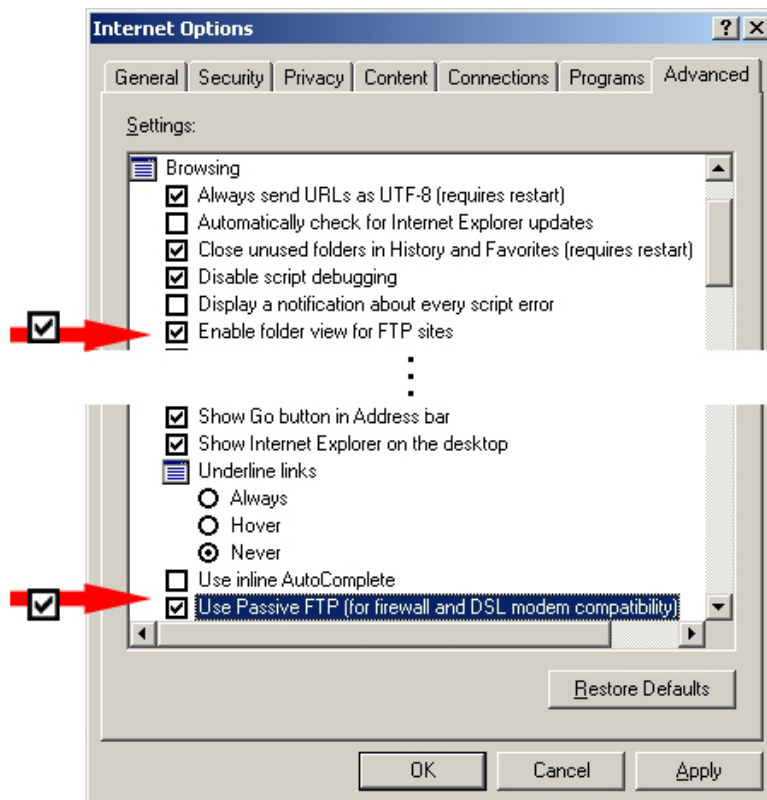
Internet Explorer

- ftp access possible with version 5.5 or higher
- use passive ftp mode
- activate directory view for ftp sites

For the adjustment choose in the Internet Explorer **Options** > *Internet options*, register "extended" in the area "Browsing" and set the following settings:

- activate: "activate directory view for ftp sites"
- activate: "use passive ftp..."

The settings are taken over when re-starting the Internet Explorer.




Netscape

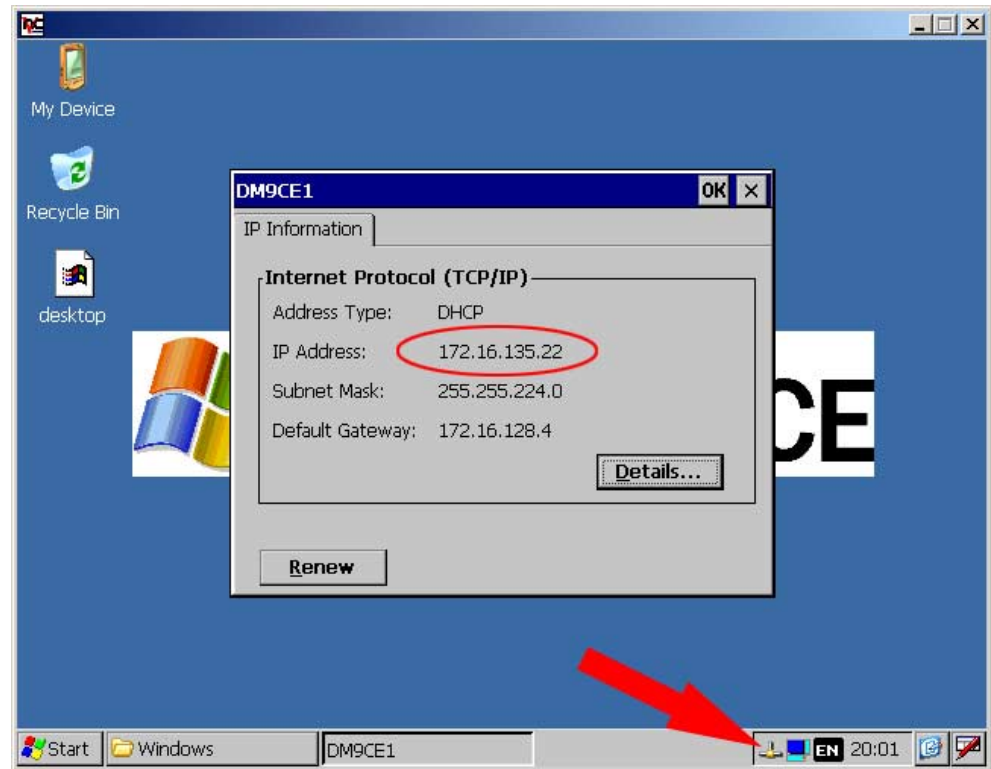
- Ftp access only possible with version 6.0 or higher, you need no further settings.

### Establishing a ftp connection

In the following the establishing of an ftp connection between a Windows® based PC (here Windows® 2000) with Internet Explorer as ftp client and your Touch Panel is shown.

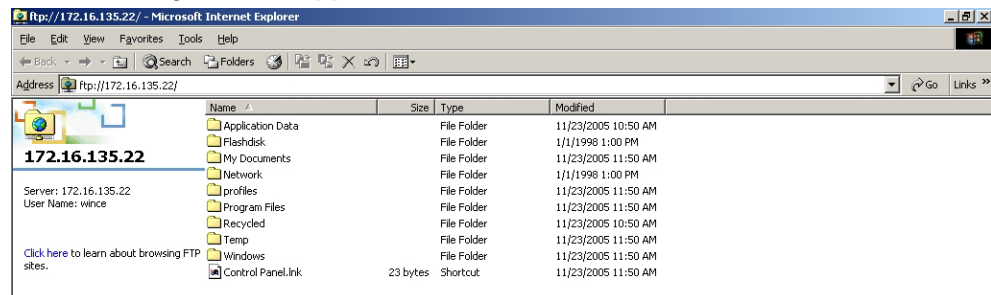
- Connect your Touch Panel with the network where your PC is a member via an Ethernet cable.
- Switch on your Touch Panel.

As soon as your Touch Panel is connected via Ethernet, you may monitor the IP address data via .



- After you've confirmed the pre-settings, start your ftp client and enter the following text into the "address bar":
- `ftp://wince:vipatp@IP-Adresse`

The following window appears:



Here you may execute the wanted file operations.

**http server**

The Touch Panel has an integrated http server (web server) that allows depending on the access the administration of the Touch Panel res. of websites in the Touch Panel. The administrative access to the http server happens via Ethernet from the PC by setting the IP address of the Touch Panel with attached "Admin" type.

By means of websites you may e.g. publish online documentations for a connected PC or go online with applications at the PC.

**Web admin**

As web admin you have access to all functions that are required for uploading and administrating of websites at the Touch Panel. Additionally you may set the access rights for user and create user groups. More detailed information about creating and administrating of websites at the Touch Panel is to be found in the online documentation of the web servers.

The login as web admin requires the following steps:

- Start the web browser at your PC and enter the following into the address bar: IP address/webadmin
- Enter the following into the authentication:  
User name: **wince**  
Password: **vipatp**

**Remember to store your changes permanently in the registry via Start > Programs > KuK Tools > Save Registry!**

**Sys admin**

Sys admin provides you with system administration rights for the administration of the Touch Panel. Here you may see system information and may administrate files, processes and registry entries.

The login as sys admin requires the following steps:

- Start the web browser at your PC and enter the following into the address bar: IP address/sysadmin
- Enter the following into the authentication:  
User name: **admin**  
Password: **vipatp**

**Functions**

As sys admin you have access to the following functions:

Group	Area	Description
System Tools	System Info	System information about hardware, memory sharing and date/time.
	Processes	Shows all running processes. Via "Kill" these can be terminated singularly res. be started with the field "Launch process".
File Browser	Drives	File manager that offers all relevant functions for administration of files and directories.
Registry Editor	Registry key	Registry editor for deleting, altering and creating of registry entries.

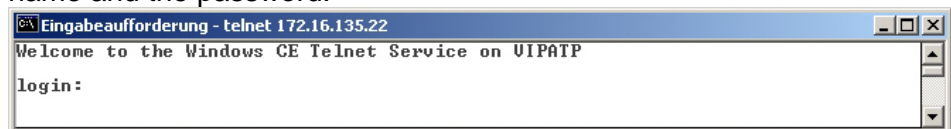
## Telnet server

Telnet is a text based client-server protocol on TCP level. By means of a Telnet client like e.g. the "MS-DOS console" in your Windows® operating system you may execute text based all file remote functions at your Touch Panel like copy, delete and create files and directories. You may also start applications. Terminating an application is not possible.

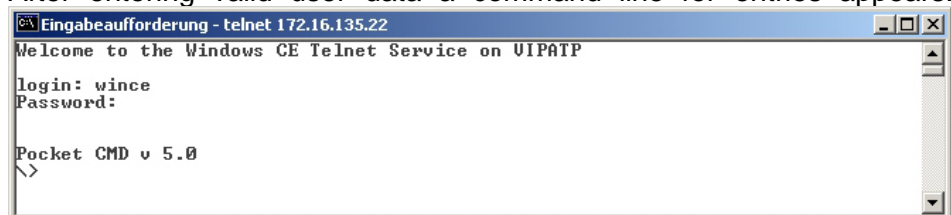
## Establishing a Telnet connection

The establishing of a Telnet connection is password protected and has the following approach:

- Start a Telnet client like for example "MS-DOS console" at your PC and enter the following into the address bar:  
telnet IP address  
When the connection is established, the Touch Panel asks for the user name and the password.



- Enter the following:  
Login: **wince**  
Password: **vipatp** (entry is hidden)  
After entering valid user data a command line for entries appears:

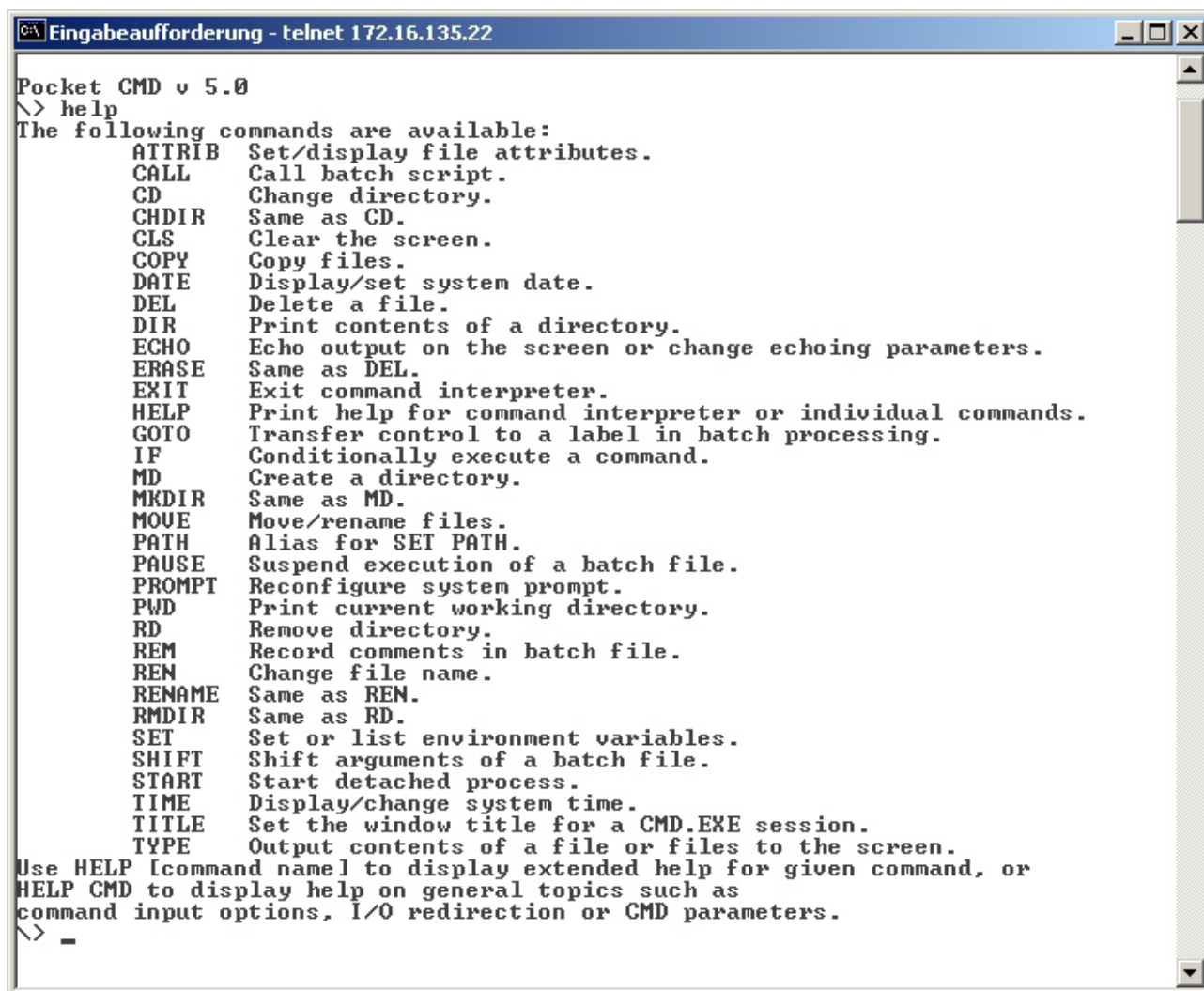


By entering `Exit` res. closing the window you may terminate the Telnet connection at any time.

## Commands

After establishment of a Telnet connection the Touch Panel provides you with commands. A list of possible commands with a short description is available via the command help.

By beginning with "help" before a command you receive help to this command.

A screenshot of a Windows-style window titled "Eingabeaufforderung - telnet 172.16.135.22". The window contains a text-based interface for "Pocket CMD v 5.0". The user has entered the command "\> help". The output lists 30 available commands with their descriptions. At the bottom, there is a note about using the HELP command and a prompt "\> \_".

```
Pocket CMD v 5.0
\> help
The following commands are available:
  ATTRIB  Set/display file attributes.
  CALL    Call batch script.
  CD      Change directory.
  CHDIR   Same as CD.
  CLS     Clear the screen.
  COPY    Copy files.
  DATE    Display/set system date.
  DEL     Delete a file.
  DIR     Print contents of a directory.
  ECHO    Echo output on the screen or change echoing parameters.
  ERASE   Same as DEL.
  EXIT    Exit command interpreter.
  HELP    Print help for command interpreter or individual commands.
  GOTO    Transfer control to a label in batch processing.
  IF      Conditionally execute a command.
  MD      Create a directory.
  MKDIR   Same as MD.
  MOVE    Move/rename files.
  PATH    Alias for SET PATH.
  PAUSE   Suspend execution of a batch file.
  PROMPT  Reconfigure system prompt.
  PWD     Print current working directory.
  RD      Remove directory.
  REM     Record comments in batch file.
  REN     Change file name.
  RENAME  Same as REN.
  RMDIR   Same as RD.
  SET     Set or list environment variables.
  SHIFT   Shift arguments of a batch file.
  START   Start detached process.
  TIME    Display/change system time.
  TITLE   Set the window title for a CMD.EXE session.
  TYPE    Output contents of a file or files to the screen.
Use HELP [command name] to display extended help for given command, or
HELP CMD to display help on general topics such as
command input options, I/O redirection or CMD parameters.
\> _
```

### VNC server

The Touch Panel has an integrated VNC server (virtual network control) that allows the total control of the Touch Panel with a PC via network. For this, a window displays the current Touch Panel content for remote control. The operating happens via PC keyboard and mouse. Using VNC the context menu functions are available via the right mouse button.

Condition for the VNC communication is that the VNC server is started at the Touch Panel and a VNC client at the PC.




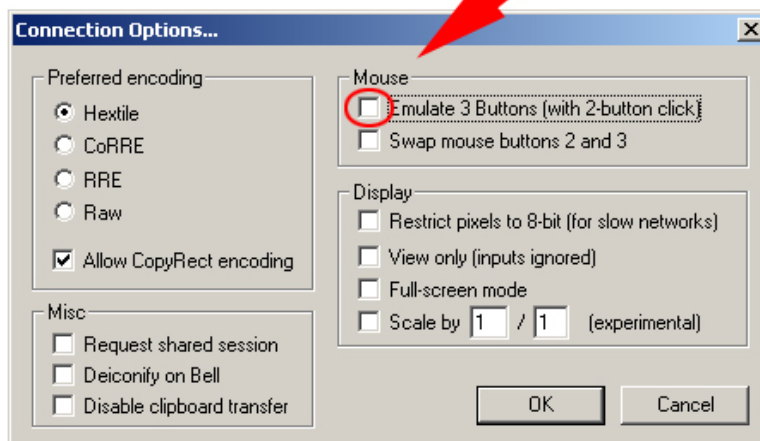
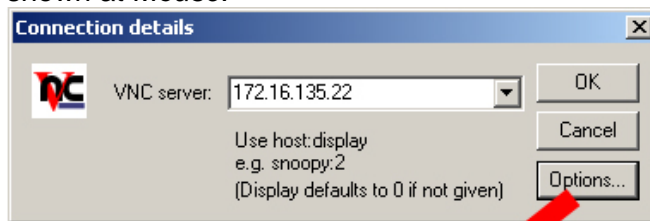
#### Note!

Since with the VNC server all safety attitudes can be gone around, you should use these exclusively for start-up! For this reason the VNC server is on delivery deactivated.

### Establishing a VNC connection

The VNC connection establishment has the following approach:

- Click on  at the Touch Panel and start Windows\CEVncSvr.exe. Please regard that there is no message that the server has been started! You may also start the VNC server at the Touch Panel via a Telnet connection by entering the command `cevncsvr` in the command console with an active Telnet connection.
- Now start the VNC client `vncviewer.exe` at your PC.
- Click on [Options] and de-activate the field "Emulate 3 Buttons..." like shown at *Mouse*.



- Enter the IP address of the Touch Panel at *VNC server*. With [OK] a VNC connection is established and the screen content of the Touch Panel is monitored within a window.

Closing the VNC window terminates the VNC connection, the server keeps running.

## Access to the network resources

### Outline

The Touch Panel allows you to access shared resources in a Microsoft network like drives and printer. Here you may assign existing public directories or printer in the network to local directories or printer in the Touch Panel.

Condition for this is that you login at the network with your user name and password.

The assignment of a network resource happens in the Touch Panel via the command console "Command Prompt". Start the command console with **START > Programs > Command Prompt**.

The access to the network resource happens with the commands *Net view* and *Net use*.

### List released resources

Shared resources of a network PC can be listed with the command: `\> net view PC-Name`

For example `net view testserver` lists all shared resources of the network PC "test server". To test the physical connection a PING to the IP address of the network PC may be executed if there are problems while contacting the network PC.

```
\> net view testserver
Shared resources on \\testserver:

Share name      Type    Used as      Comment
-----
Archive         Disk   (null)       Process data
KyoEDV          Print  (null)       Kyocera FS-680 Printer
Command completed successfully
\> █
```

### Connect net drive

The connection of a local name at the Touch Panel with a shared drive of the network PC happens with the following approach:

- Enter the following in the command prompt:  
`\> net use local_name \\network drive /user:User name`
- Enter *user name*, *password* and where app. *user group*.

After the successful login the following message appears:

Successfully mapped to *network name*.

The connected network drive is then available at the Touch Panel with the *local name* via *My Device* at *Network*.

### Example:

Local\_Name: **data**, network drive: **testserver\archive**, User name:**gast**

Entry: `\> net use data \\testserver\archive /user:gast`

The connected network drive is then available via `\network\data` at the Touch Panel.



**Configure network printer**

The configuration of a network printer happens with the following approach:

- Enter the following into the command prompt:  
`\> net use printer name network printer`

Example:

Printer name: Printer, network printer: \\testserver\printer

Entry: `\> net use printer \\testserver\printer`

- Enter *user name*, *password* and where *app. user group*.

After the successful login the following message appears

Successfully mapped to network printer

The printer may now be accessed as "network\printer".

**Test print**

For example you may print the content of the current directory with `\> dir > network\printer`.

**List network connections**

The listing of all network connections of your Touch Panel happens via

`\> net use`

```
\> net use
Connected resources:

Status          Local Name          Remote Name
-----
Connected       data                \\testserver\archiv
Connected       printer             \\testserver\printer
Command completed successfully
\> █
```

**Terminate network connections**

You may terminate already assigned network resources via

`\> net use local_name /d`

Example: `\> net use data /d` deletes the network connection to the drive "archive" of "test server".

**Note!**

To keep the settings also after power on, you have to store them to the registry with **START** > Programs > KuK Tools > Save Registry.

## Integration to WLAN network

**Overview** By plugging a SDIO WLAN card there is the possibility to integrate your Touch Panel to a WLAN network. For this driver for the corresponding SDIO WLAN cards are pre-installed.

**WLAN via SDIO card** Please regard only SDIO WLAN cards are supported which drivers are pre-installed in the Touch Panel. In the Touch Panel driver exist for the following SDIO cards:

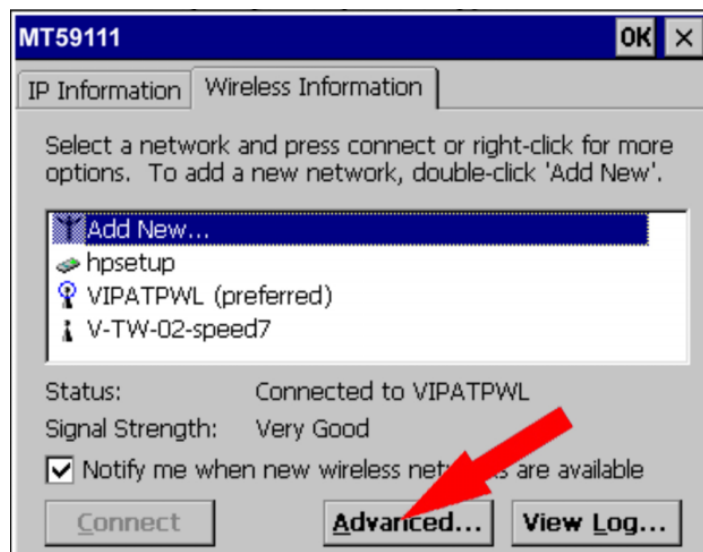
- Socketcom P300
- Spectec SDW821
- JustMobile Wireless LAN Card.

**Installation**

- PowerON the Touch Panel.
- Plug the SDIO card → the SDIO card is identified and a dialog window, which shows the available WLAN networks is opened.

**WLAN integration** Directly after installation a dialog window is shown. Here the available WLAN networks are displayed. Chose the corresponding network and click to [Connect]. At a safety-relevant network set the network parameters and enter the network key. If the parameters are correct the connection is established.

**Automatically connect to WLAN** If the Touch Panel should connect automatically to your WLAN network after startup, so the automatically connection is to be activated. For this open the register "Wireless Information" in the dialog window and click to the [Advanced...] button.



The following window is shown:



By activating of "Automatically connect to non-preferred networks" an automatically connection to the chosen network is established as soon as the network is available.



**Note!**

To keep the settings also after PowerON, you have to store them to the registry with **START** > *Programs* > *KuK Tools* > [*Save Registry*].

## Firmware update

### Overview

You may execute a firmware update via SD or CF card. The newest firmware version may be ordered by the VIPA Panel Support.



#### Attention!

When installing a new firmware you have to be extremely careful. Under certain circumstances you may destroy the Touch Panel, for example if the voltage supply is interrupted during transfer or if the firmware file is defective. In this case, please call the VIPA Panel Support!

Please regard that the firmware to be transferred is not checked by the Touch Panel. Always use the firmware, which you received for exactly this Touch Panel from our Panel Support.

### Proceeding

- For new firmware contact the VIPA Panel Support. They will send you the appropriate firmware as zip file via mail.
- Unzip the zip file and store it at your PC.
- Copy the unzipped files into the root directory of your memory card. As memory card a SD or CF card may be used.
- Switch off the power supply from your panel. Plug the memory card to your panel and switch on the power supply again. → As soon as a new firmware is found at the memory card, it is downloaded to the Touch Panel and the message "Update please wait" is displayed. If the update is finished (after max. 5min.) "Update finished" is displayed.
- Switch off the Power supply from your Panel. Remove the memory card and switch on the power supply again. Now the Touch Panel starts up with the new firmware.

If there is no message "Update finished" displayed after maximally 15 minutes or the Touch Panel does not start-up after firmware update, you should contact the VIPA Panel Support.



#### Note!

Please regard depending upon the used version the Touch Panel may be adjusted again!

### Adjustments

The following adjustments could be necessary:

- New calibration of the touch screen
- Depending on the visualization software the license key may be re-entered. More may be found in the documentation of the visualization software.

Do not forget to store the settings durably with the KuK Tools. For this go to **Start** > *Programs* > *KuK Tool* > *KuK Tool* and store the settings with [Store].

## Chapter 3 Installation Guidelines

### Overview

The chapter "Installation Guidelines" gives you information about the interference-immune installation of Programmable Logic Controls (PLC) together with a Touch Panel.

Here we describe possible paths in which interference can enter the controller, how you ensure the electromagnetic compatibility (EMC) and how to approach shielding and screening issues.

### Content

Topic	Page
<b>Chapter 3 Installation Guidelines</b> .....	<b>3-1</b>
Basic rules for the EMC-equitable assembly of installations.....	3-2
EMC-equitable assembly.....	3-6
EMC-equitable cabling .....	3-7
Special precautions providing high noise immunity .....	3-11
Checklist for the EMC-compliant installation of controllers .....	3-12

## Basic rules for the EMC-equitable assembly of installations

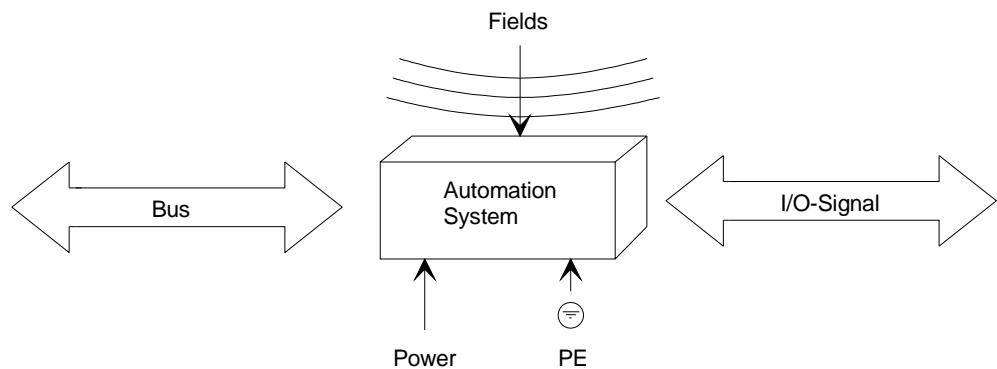
### What is EMC?

The term electromagnetic compatibility (EMC) refers to the ability of an electrical device to operate properly in an electromagnetic environment without interference from the environment or without the device causing illegal interference to the environment.

The Operation Panels are developed for applications in harsh industrial environments and complies with EMC requirements to a large degree. In spite of this you should implement an EMC strategy before installing any components, which should include any possible source of interference.

### Possible sources for disturbances

Electromagnetic interference can enter your system in many different ways:



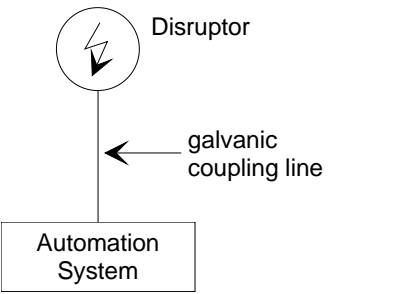
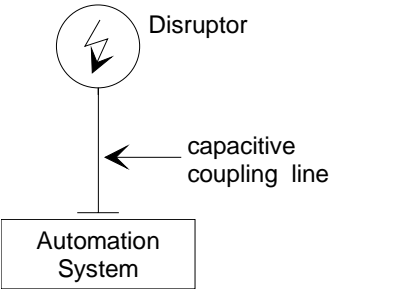
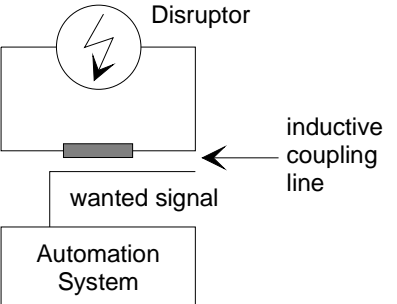
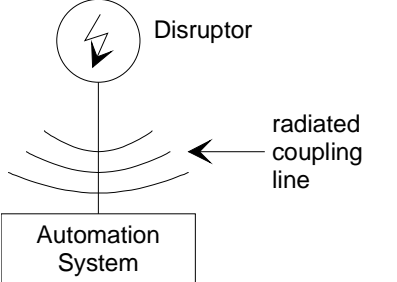
Interference is coupled into your system in different ways, depending in the propagation medium (conducted or not conducted) and the distance to the interference source.

We differentiate between:

- galvanic coupling
- capacitate coupling
- inductive coupling
- radiated power coupling

**Coupling mechanisms and interference sources**

The following table shows the four different coupling mechanisms, their causes and possible interference sources.

Coupling mechanism	Cause	Typical source
<p><b>Galvanic coupling</b></p> 	<p>Galvanic or metallic coupling always occurs when two current circuits have a common line.</p>	<ul style="list-style-type: none"> <li>• Pulsed devices (Net influence from transducers and foreign net devices)</li> <li>• Starting motors</li> <li>• Different potential of component cubicles with common current supply</li> <li>• Static discharges</li> </ul>
<p><b>Capacitate coupling</b></p> 	<p>Capacitate or electric coupling occurs between conductors with different potential. The coupling is proportionate to the time wise change of the voltage.</p>	<ul style="list-style-type: none"> <li>• Interference through parallel signal lines</li> <li>• Static discharge of the personnel</li> <li>• Contactors</li> </ul>
<p><b>Inductive coupling</b></p> 	<p>Inductive or magnetic coupling occurs between two current active line loops. The magnetic flows associated with the currents induct interference voltages. The coupling is proportional to the time related change of the current.</p>	<ul style="list-style-type: none"> <li>• Transducers, motors, electric welding devices</li> <li>• Parallel net cables</li> <li>• Cables with toggled currents</li> <li>• Signal cable with high frequency</li> <li>• Unused coils</li> </ul>
<p><b>Radiate power coupling</b></p> 	<p>One talks of radiate power coupling, when an electromagnetic wave meets a line circuit. The hit of the wave inducts currents and voltages.</p>	<ul style="list-style-type: none"> <li>• Sender in the neighborhood (e.g. walkie-talkie)</li> <li>• Sparking lines (sparking plugs, collector of electric motors, welding devices)</li> </ul>

**Basic rules for ensuring EMC**

In many cases, adherence to a set of very elementary rules is sufficient to ensure EMC. For this reason we wish to advise you to heed the following rules:

**During the installation of your automation units you should ensure that any inactive metal components are grounded via a proper large-surface earth!**

- Interconnect any inactive metal components via low-impedance conductors with a large cross-sectional area.
- Execute screw connections at coated and anodized metal parts either with special contact washer or remove the isolating protective film.
- Install a central connection between the chassis ground and the earthing/protection system.

**Ensure that cabling is routed properly during installation!**

- Divide the cabling into different cable groups (High voltage lines, power supply lines, signal lines, data lines).
- Always install high voltage lines and signal or data lines in separate channels or bundles.
- Install signal and data lines as close as possible to any metallic ground surfaces (e.g. frames, metal rails, sheet metal).

**Ensure that the screening of lines is grounded properly!**

- Data lines must be screened. The screen has to be laid both-sided.
- Analog lines must be screened. Where low-amplitude signals are transferred it may be advisable to connect the screen on one side of the cable only.
- Attach the screening of cables to the ground rail by means of large-surface connectors located as close as possible to the point of entry. Clamp cables mechanically by means of cable clamps. Route the connected screen to the modules without interruptions, but don't connect the screen again.
- Ensure that the ground rail has a low-impedance connection to the cabinet/cubicle.
- Use only metallic or metallic covers for the plugs of screened data lines.



**In critical cases you should implement special EMC measures!**

- Connect snubber networks to all inductive loads that are not controlled by special EMC modules.
- Use incandescent lamps for illumination purposes inside cabinets or cubicles, do not use of fluorescent lamps.

**Create a single reference potential and ensure that all electrical equipment is grounded wherever possible!**

- Ensure that grounding measures are implemented effectively. The controllers are earthed to provide protection and for functional reasons.
- Provide a star-shaped connection between the plant, cabinets/cubicles and the grounding/ protection system. In this way you can avoid ground loops.
- Where potential differences exist you must install sufficiently large equipotent bonding conductors between the different parts of the plant.

## EMC-equitable assembly

Mostly, measures for suppressing interference voltages are only taken, when the control is already in commission and the perfect receive of a wanted signal is disturbed.

Causes for such interference's are in the most cases inadequate reference potentials, coming from mistakes at the device assembly and installation.

### **Guidelines for assembling and grounding of inactive metal parts**

When assembling the devices, you have to ensure the large-surface grounding of the inactive metal parts. A correctly done grounding supports an unambiguous reference potential for the control and reduces the impact of coupled interference's.

Grounding means the conducting connection of all inactive metal parts. The sum of all interconnected inactive parts is called Ground.

Inactive parts are all conductive parts electrically separated from all active parts by means of a basic isolation and that may only get voltage in case of an error.

The ground must not adopt dangerous contact voltage even in case of an error. Thus you have to connect the ground with the protected earth conductor. To avoid ground loops, local distant ground constructions (cubicles, construction and machine parts) have to be connected with the protected earth conductor system in star-topology.

Please regard at grounding:

- Connect the inactive metal parts as carefully as the active ones.
- Take care of impedance-low metal-metal-connections, for e.g. with large-surface and well conductive contacts.
- If you include coated or anodized metal parts in the grounding, you have to come through the isolating protection layers. For this you may use special contact washers or remove the isolation layer.
- Protect the connection points from corrosion, e.g. with grease.
- Moveable grounding parts (e.g. cubicle doors) have to be connected via flexible ground strips. The ground strips should be short and have a large surface, because the surface is decisive for the diversion of high frequency interference's.

## EMC-equitable cabling

**Line routing** Content of this section is the line routing of bus, signal and supply lines. Object of the line routing is to suppress the "slurring" at parallel lines.

**Line routing inside and outside of cubicles** For an EMC-equitable routing of the lines it is convenient to divide the cables in different groups and install each group itself:

*Group A*

- screened bus and data lines
- screened analog lines
- unshielded lines for direct voltage  $\leq 60V$
- unshielded lines for alternating voltage  $\leq 25V$
- Coaxial cables for monitors

*Group B*

- unshielded lines for direct voltage  $>60V$  and  $\leq 400V$
- unshielded lines for alternating voltage  $>25V$  and  $\leq 400V$

*Group C*

- unshielded lines for direct and alternating voltage  $>400V$

*Group D*

- Lines for H1 respectively TCP/IP

**Combination of groups**

Following the table you may see the conditions for the cabling of the line groups by combining the single groups:

	Group A	Group B	Group C	Group D
Group A	[1]	[2]	[3]	[4]
Group B	[2]	[1]	[3]	[4]
Group C	[3]	[3]	[1]	[4]
Group D	[4]	[4]	[4]	[1]

[1]	The lines may be installed in common bundles or cable trusses.
[2]	The lines have to be installed in different bundles or cable trusses (without min. distance).
[3]	The lines have to be installed in different bundles or cable trusses inside of cubicles and outside of the cubicle but inside the building in separated cable trusses with a min. distance of 10cm.
[4]	The lines have to be installed in different bundles or cable trusses with a min. distance of 50cm.

**Line routing outside of buildings**

Wherever possible, exterior cabling should be installed on metallic cable trays. A galvanic connection must be provided for joints between cable trays.

You must abide by the applicable lightning protection and grounding regulations when installing exterior cables.

**Lightning protection**



**Attention!**

Where cables and signal lines for PLC equipment are installed outside of buildings, the conditions for internal and external lightning protection must be satisfied.

- Exterior lines should either be installed in metallic conduit pipes that is grounded on both ends or in steel-reinforced concrete cable trunks with continuously connected reinforcing.
- Signal lines should be protected against overvoltage by varistors or by lightning arrester filled with rare gas.
- Install these protective elements at the location where the cables enter the building.



**Note!**

Any lightning protection system must be based on an individual assessment of the entire plant. For questions please contact VIPA GmbH.

**Equipotential bonding**

Potential differences can occur between different sections when controllers and peripheral equipment are connected by means of non-isolated connections or the screens of screened cables are connected at both ends and grounded on different sections of the plant.

One reason for a potential difference can be that different sections of the plant are powered from different power sources. These potential differences must be reduced by means of equipotential bonding conductors to ensure that the electronic equipment employed on the plant operates properly.

**Rules for equipotential bonding**

- The lower the impedance of the equipotential bonding conductor, the higher the effectiveness of potential equalization.
- The impedance of the equipotential bonding conductor must not exceed 10% of the impedance of the screen where screened signal lines are connected between the different sections of the plant and the screening is connected to ground/neutral on both sides.
- The cross-sectional area of the equipotential bonding conductor must be calculated to carry the maximum equalization current. The following cross-sections have been successfully employed:
  - 16mm<sup>2</sup> Cu for equipotential bonding conductors up to 200m
  - 25mm<sup>2</sup> Cu for equipotential bonding conductors exceeding 200m.
- Use copper or galvanized steel for equipotential bonding conductors. These must be connected to ground/neutral by means of large-surface connections that are protected from corrosion.
- The equipotential bonding conductor should be installed in such a manner that it includes the smallest surface between the bonding conductor and the signal lines.

**Screening of lines and cables**

Screening is one method commonly used to reduce (attenuate) the interference pick-up from magnetic, electrical or electromagnetic fields.

- Interference on screens is conducted to ground by the conductive connection between the screen and the screening rail/enclosure. To avoid interference from these currents it is very important that the neutral connection is a low-impedance connection.
- You should only use of cables that are provided with a braided screen. The degree of screening should be more than 80%.
- Avoid cables with foil-type screens as the foil is easily damaged by tension and pressure at the point of attachment; this can result in reduced effectiveness of the screening action.
- As a rule you should always ground the screens of cables on both ends. This is the only way in which you can ensure that high frequency interference is attenuated properly.

### One-sided grounding of screens

In exceptional cases it may be necessary to ground the screen on one side only. However, this will only attenuate the lowest frequencies. The one-sided grounding of screens may provide advantages when:

- It is not possible to install an equipotential bonding conductor
- Analogue signals (a few mV or  $\mu\text{A}$ ) must be transmitted
- Foil-type screening (static screening) is employed.

You should always use metallic or metallic covers for serial data lines. Connect the screen of the data line to the cover. Do **not** connect the screen to PIN 1 of the connector!

In case of stationary operations it is recommended that the remove the insulation from the screened cable without cutting the screen and to attach this point to the screening/neutral rail.



#### Note!

Potential differences can give rise to an equalization current via the screen connected between the two ground connections.

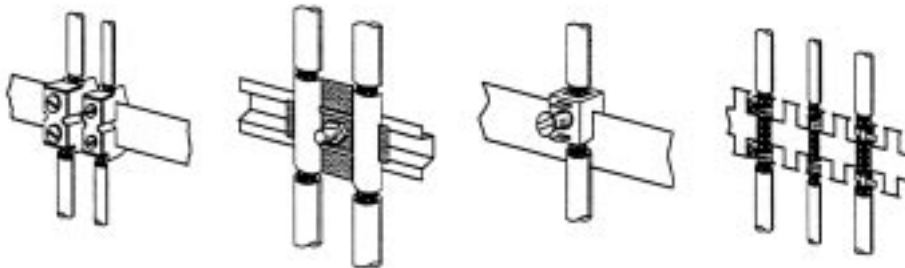
In this case you must install an additional equipotential bonding conductor.

### Connecting the screen

Please observe the following points when you handle the screens:

- Use only metallic cable clamps when connecting the screening of cables. These clamps must provide a good electrical contact and a large-surface connection to the screen.
- Attach the screens to the screening rail directly at the point where the cables enter the enclosure.

The screening conductor must be continued to the module without interruption, however, it must not be connected to the module!



## Special precautions providing high noise immunity

### Inductors require snubber networks

Inductors controlled by your programmable controller (e.g. contactors and relays) do not normally require additional snubber networks or suppressors as the respective modules have been provided with the required components.

Snubber networks must only be connected to inductors when output circuits can be disabled by means of additional contacts (e.g. relay contacts). In this case the integrated suppressors on the module are also disabled.

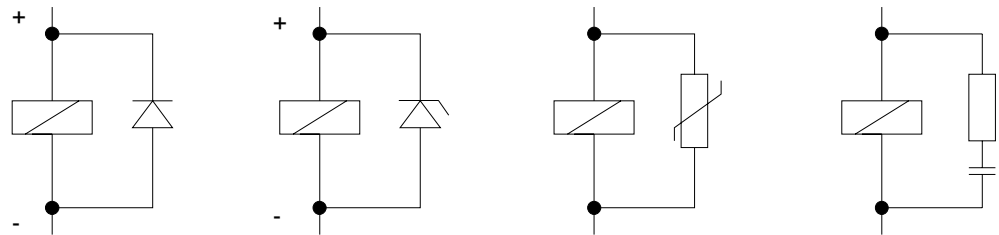
You can connect diodes to suppress back-emc, varistors or RC-networks to the inductors.

Connections of DC-activated inductors using a diode

using a Z-diode

Connections of AC-activated inductors

using a varistor using RC-network



### Power outlet for PGs

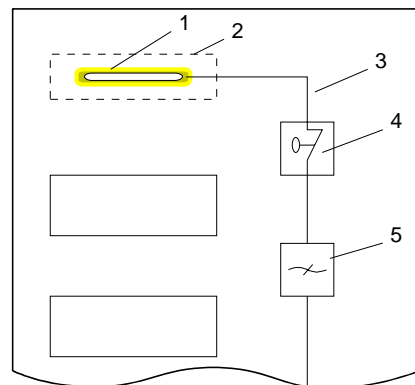
Every cubicle must be provided with a power outlet for the PU. These outlets must be wired to the distribution system, which is also used to connect the neutral conductor for the cubicle.

### Cubicle illumination

The cubicle illumination should consist of incandescent lights, e.g. LINESTRA-lamps. Avoid using fluorescent lamps as these lamps can cause interference.

If you can not avoid using fluorescent lamps you should implement the steps outlined in the following figure.

### Suppression of fluorescent lamps in cubicles



- [1] Fluorescent lamp
- [2] Screen above the lamp
- [3] Screened cable
- [4] Switch with metallic cover
- [5] Line filter or screened power cable

## Checklist for the EMC-compliant installation of controllers

EMV-measures	Space for Notes
<b>Connection of the inactive parts</b>	
You should take special care to check the connections of: <ul style="list-style-type: none"> <li>• Module racks</li> <li>• Frames</li> <li>• Screen and protected earth conductor</li> </ul>	
Are all the inactive metal parts interconnected by means of large-surface and low-impedance connections?	
Has a proper connection been installed with respect to the ground/protected earth conductor system?	
Has the isolation been removed from varnished and anodized surfaces or have these connections been fitted with special contact washer?	
Have the connection been protected from corrosion, e.g. by means of grease?	
Have doors been grounded by means of grounding straps connected to the body of the cubicle?	
<b>Cable routing</b>	
Cabling divided into groups?	
Power cables (230 ... 400V) and signal lines installed in separate channels or bunches?	
<b>Potential compensating</b>	
When installing the equipment at separate locations, check the installation of the potential compensating line.	
<b>Cable screen</b>	
All covers of plugs are metallic?	
All analog and data lines installed screened?	
Line screens attached to the screening or the protected earth conductor?	
Have the screens been connected by means of large-surface and low-impedance cable clamps?	
Cable screens grounded both-sided where possible?	
<b>Inductors</b>	
Have the coils of contactors controlled by means of contacts been connected to snubber networks?	



## Appendix

### A Index

#### A

Access data ..... 2-15  
ActiveSync ..... 2-13

#### C

CF ..... 1-6  
Commissioning ..... 2-4  
Components ..... 1-6  
Control Panel ..... 2-11

#### D

Deployment ..... 2-1  
Dimensions ..... 1-8

#### E

EMC ..... 3-2  
  Basic rules ..... 3-4  
  Checklist installation ..... 3-12  
  Coupling mechanisms ..... 3-3  
  Disturbance-free operation ..... 3-11  
  Equipotential bonding ..... 3-9  
  equitable assembly ..... 3-6  
  equitable cabling ..... 3-7  
  Interferences ..... 3-2  
  Lightning protection ..... 3-8  
  Screening ..... 3-9

#### F

Firmware update ..... 2-26  
Flash disc ..... 1-6  
ftp server ..... 2-16

#### H

http server ..... 2-18

#### I

Installation ..... 2-2  
  cutting ..... 2-2  
  guidelines ..... 3-1

#### L

Login data ..... 2-15

#### M

Memory management ..... 1-6  
MMC ..... 1-6  
MPI interface ..... 1-7  
MPI parameters ..... 2-12

#### N

net use ..... 2-22  
net view ..... 2-22  
Network  
  Access ..... 2-22  
  connection ..... 2-23  
  printer ..... 2-23

#### P

Partnership ..... 2-14  
Password ..... 2-15  
PLC connection ..... 2-6  
Power supply ..... 1-7, 2-3  
Profibus-DP interface ..... 1-7  
Properties ..... 1-3

#### R

RS485 ..... 1-7

#### S

Safety Information ..... 1-2  
SD ..... 1-6  
Server ..... 2-15  
Software keyboard ..... 2-10  
Startup behavior ..... 2-4  
Startup Manager ..... 2-4  
Structure ..... 1-4  
Sys admin ..... 2-18  
System setting ..... 2-11

#### T

Task bar ..... 2-9  
Technical Data ..... 1-9  
Telnet ..... 2-19

#### U

USB  
  USB-B ..... 1-7

#### V

VNC server ..... 2-21

#### W

Web admin ..... 2-18  
Windows® CE ..... 2-7  
WLAN ..... 2-24  
Work memory ..... 1-6

