

How-To-Do

Hardware Configuration of the CPU 317NET with external CPs on the SPEED Bus by WinPLC7 from VIPA

Content

| | |
|--|---|
| Hardware Configuration of the CPU 317NET with external CPs on the SPEED Bus by WinPLC7 from VIPA | 1 |
| 1 General | 2 |
| 1.1 Information | 2 |
| 1.2 Reference | 2 |
| 2 Step by Step Procedure of the Configuration..... | 3 |
| 3 Revision History..... | 5 |
| 3.1 Changes:..... | 5 |

1 General

1.1 Information

This 'How-To-Do' describes, how you can perform the hardware configuration of the CPU 317NET, on which external CPs are connected via SPEED Bus, by WinPLC7 from VIPA.

You can find a detailed description of the CPU 317NET in the manual under the link http://www.vipa.com/uploads/tx_sbdownloader/HB140E_cpu_317-4NE12_12-51.pdf.

1.2 Reference

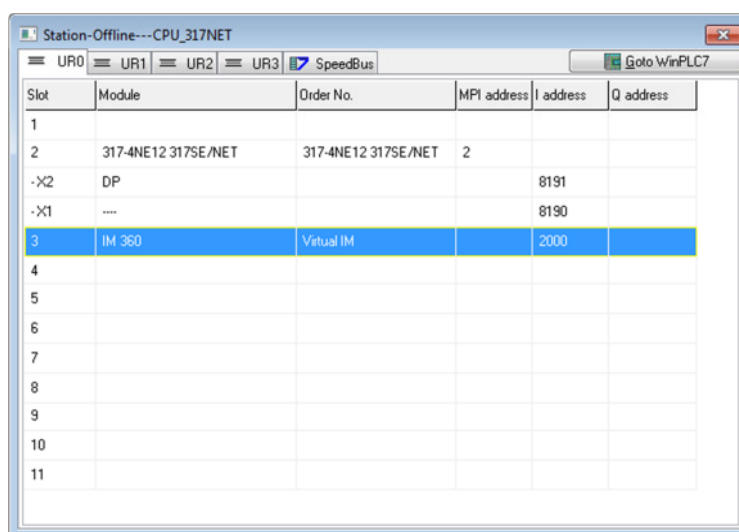
In this 'How-To-Do' the principal procedure is described by means of an example.

Liability for material defects and defects of this documentation, especially for the correctness, accuracy, freedom and protection of third party rights, completeness and / or usability - except for willful misconduct or bad faith - is excluded.

How-To-Do – Hardware Configuration of the CPU 317NET with ext. CPs on the SPEED Bus by WinPLC7

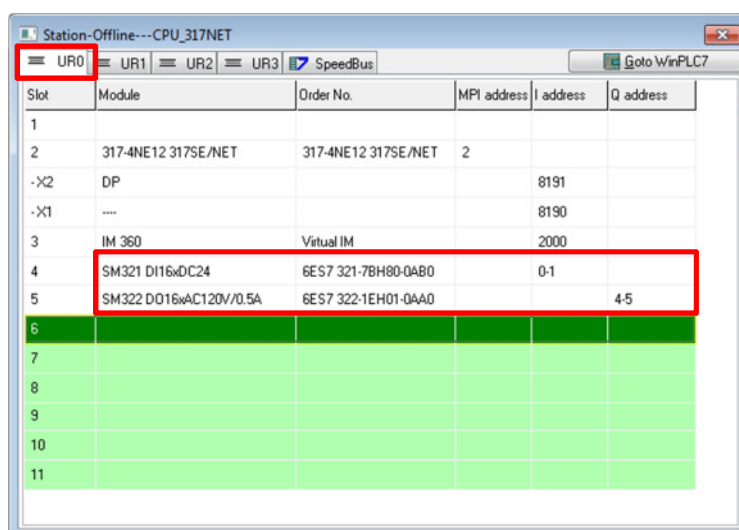
2 Step by Step Procedure of the Configuration

1. Start the WinPLC7 Tool from VIPA and create a new project.
2. Open the hardware configurator in the project-tree under “Hardware stations” -> “Create new”.
3. Now create a VIPA SPEED7 Station.
4. The catalog opens, in which you can now insert the CPU under **CPU Speed 7_CPU 317 NET_317-4NE12 317SE/NET** by double click. The integrated CPU components are automatically inserted into the UR3 Register. Now the station should look like the following picture:



| Slot | Module | Order No. | MPI address | I address | Q address |
|------|---------------------|---------------------|-------------|-----------|-----------|
| 1 | | | | | |
| 2 | 317-4NE12 317SE/NET | 317-4NE12 317SE/NET | 2 | | |
| -X2 | DP | | | 8191 | |
| -X1 | ---- | | | 8190 | |
| 3 | IM 360 | Virtual IM | | 2000 | |
| 4 | | | | | |
| 5 | | | | | |
| 6 | | | | | |
| 7 | | | | | |
| 8 | | | | | |
| 9 | | | | | |
| 10 | | | | | |
| 11 | | | | | |

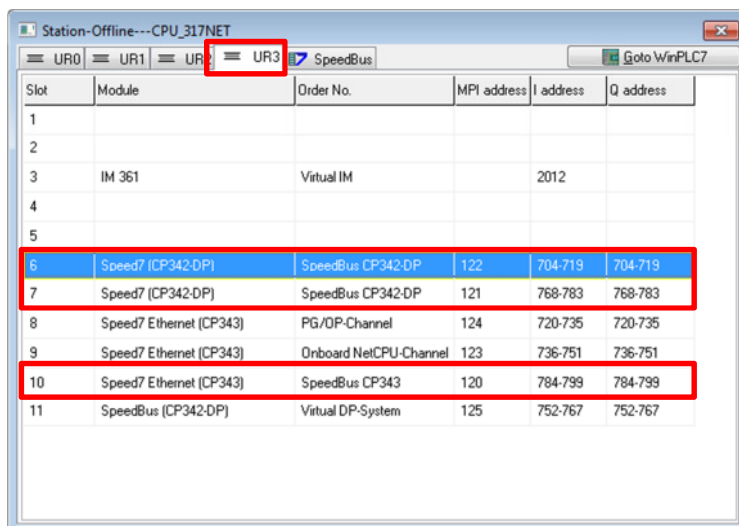
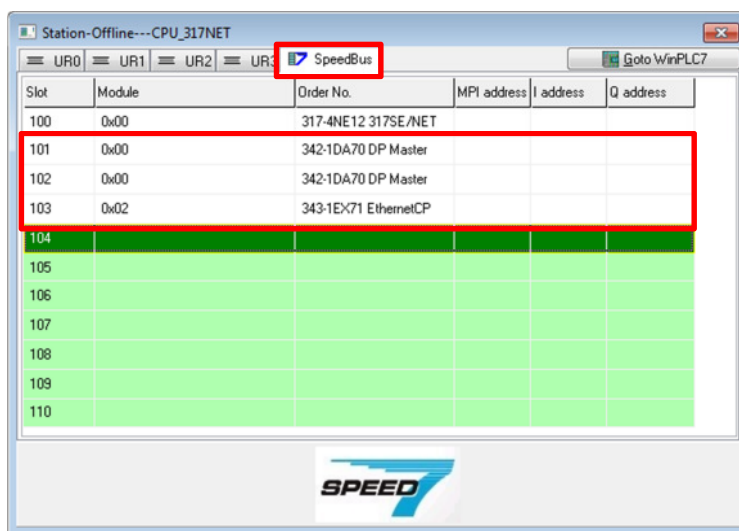
5. Insert beginning at slot 4 all modules, which are located on the standard bus to the right of the CPU. Mark the line and insert them by double click on the module. In this HTD example 1x 16Bit digital input module und 1x 16Bit Digital output module (under: **S7-300_DI-300** and **S7-300_DO-300**) were used.



| Slot | Module | Order No. | MPI address | I address | Q address |
|------|------------------------|---------------------|-------------|-----------|-----------|
| 1 | | | | | |
| 2 | 317-4NE12 317SE/NET | 317-4NE12 317SE/NET | 2 | | |
| -X2 | DP | | | 8191 | |
| -X1 | ---- | | | 8190 | |
| 3 | IM 360 | Virtual IM | | 2000 | |
| 4 | SM321 DI16xDC24 | 6ES7 321-7BH80-0AB0 | | 0-1 | |
| 5 | SM322 DO16xAC120V/0.5A | 6ES7 322-1EH01-0AA0 | | | 4-5 |
| 6 | | | | | |
| 7 | | | | | |
| 8 | | | | | |
| 9 | | | | | |
| 10 | | | | | |
| 11 | | | | | |

How-To-Do – Hardware Configuration of the CPU 317NET with ext. CPs on the SPEED Bus by WinPLC7

6. Shift to the register card „Speed Bus“. Here you must insert all external CPs, which are located to the left of the CPU on the SPEED Bus. In this HTD example 2x DP-Master (directory: **S7-300 -> Speed-Bus-Module -> 342-1DA70 DP Master**) and 1x Ethernet CP (directory: **S7-300 -> Speed-Bus-Module -> 343-1EX71 Ethernet-CP**) were used. Now the station should look like the following picture:



7. For transferring the hardware configuration you must at first specify the mode of the transfer. This must be adjusted in the menu bar under „Target“. Then execute the transfer of the hardware configuration in the menu bar.
8. Then a window opens, in which the detailed settings for the transfer are adjusted.
9. Close the hardware configurator after the transfer.

3 Revision History

3.1 Changes:

| DATUM | ÄNDERUNGEN | BEARBEITER |
|------------|--|--------------|
| 05.06.2009 | Erstellung | S. Spangher |
| 02.06.2014 | Überarbeitung Layout und Textanpassungen | N. Schlimm |
| 18.03.2014 | Übersetzung Englisch | N. Schlimm |
| 02.06.2014 | Textanpassen und Screenshots (Englisch) | M. Dörnhöfer |